



LEGNA

PELLET

REV. 1

INDICE/INDEX

PAG. 4 - Storia - Our history

PAG. 6 - Ecosostenibilità - Ecofriendly

PAG. 8 - Design

PAG. 10 - Camini a pellet - Pellet fireplaces

PAG. 24 - Stufe a pellet - Pellet stoves

PAG. 34 - Camini a legna - Wood fireplaces

PAG. 40 - Accessori pellet - Pellet accessories

PAG. 48 - Accessori legna - Wood accessories

PAG. 51 - Accessori installazione - Installation accessories

PAG. 64 - Accessori gas - Gas accessories

PAG. 68 - Prezzi - Prices



Un secolo di passione e artigianalità, attraversati da tre generazioni che dal 1921 colgono nella forma e nella funzione una filosofia da sposare e plasmare in creazioni uniche. Dall'arte del fabbro è nata una scintilla che oggi porta il nome di una fiamma viva in oltre 27 paesi in Europa e nel mondo.

Abbiamo sfidato la materia, abbiamo soffiato sul fuoco per diffondere l'eccellenza del design 100% italiano. Ogni nostra creazione porta con sé le linee inconfondibili di una storia fatta di tradizione ed evoluzione. Una sola è la certezza che guida la nostra realtà: saper fare.



OLTE 100 ANNI DI PASSIONE PER IL FUOCO...

A century of passion and craftsmanship, crossed by three generations that since 1921 capture in form and function a unified philosophy that is shaped into unique creations. From the art of a blacksmith a spark was born that today bears the name of a living flame in more than 27 countries in Europe and around the world.

We challenged the subject, we blew on the fire to spread the excellence of 100% Italian design. Each of our creations brings with it the unmistakable lines of a history of tradition and evolution. Only one certainty guides our reality: know how.



La nostra azienda è da sempre attenta al tema ecocompatibilità, per questo i nostri processi produttivi sono calibrati per mantenere al minimo l'impatto ecologico

Seguendo questa filosofia, selezioniamo i nostri fornitori, dando importanza alla qualità e ecosostenibilità dei loro processi produttivi, così da acquistare materie prime e semilavorati che siano stati prodotti inficiando il minimo possibile sull'ambiente

Questa filosofia, ci guida anche a scelte green, che stiamo gradualmente portando di serie sui nostri prodotti, un esempio: prediligere il WIFI al telecomando, tecnologia che richiede molti più componenti che di conseguenza hanno, per la loro produzione e smaltimento, un impatto molto più forte sull'ambiente

UNA SENTIERO GREEN PER UN FUTURO MIGLIORE...



Our company has always been attentive to the issue of eco-compatibility, for this reason our production processes are calibrated to keep the ecological impact to a minimum, following this philosophy we select our suppliers giving importance to the quality and eco-sustainability of their production processes, so as to purchase materials raw and semi-finished products that have been produced with minimal impact on the environment.

This philosophy also guides us to green choices that we are gradually bringing as standard to our products, for example, preferring WIFI to remote control, a technology that requires much more components which consequently have, for their production and disposal, a much greater impact strong on the environment.



Attenzione all'innovazione, usabilità e all'estetica, questa è la nostra filosofia progettuale. Progettiamo soluzioni tecniche che favoriscano l'utilizzo dei nostri prodotti così da renderli semplici e facili da utilizzare e mantenere.

Un continuo impegno progettuale per fare sempre meglio.

Creiamo delle soluzioni di prodotto uniche, studiando linee e cromie che possano integrarsi al meglio in ambienti classici e contemporanei: il nostro design sposa una visione olistica.

Tecnologia design e funzionalità, sono i punti focali del nostro impegno progettuale.

DESIGN AL SERVIZIO DEL COMFORT E DELLE PERSONE

OGIA

Attention to innovation, usability and aesthetics aspects, this is our design philosophy.

We develop technical solutions that are user friendly, which means our products are easy to use and maintain.

A constant projectual commitment to do always better.

We create products which are unique in solutions, shapes, colors that can be best integrated into classic and contemporary environments: our design is inspired by a holistic vision.

Technology, design and functionality are the focal points of our design commitment.



CAMINI
FIREPLACES
P
E
L
L
E



MINI STARFIRE 9 - 51028

Monoblocco pellet MINI STARFIRE 9 - ELETTRONICA DX, ESTRATTORE SX.

Pellet Fireplace MINI STARFIRE 9 - PCB RIGHT SIDE, SMOKE EXTRACTOR RIGHT SIDE

ITALY ONLY



MINI STARFIRE 9 (uscita fumi verticale)

Combustibile	Fuel	Pellet
Potenza Nominale / Ridotta	Min. thermal output	Nom. 9,1 / Min. 4,5 kW
Rendimento	Efficiency	max 93,3% / min 93,9%
Consumo orario pellet	Hourly pellet consumption	max -2,0 Kg/h / min -1,0 Kg/h
Autonomia	Autonomy	max -17 h / min -35 h
Capacità serbatoio	Tank capacity	35 kg
Assorbimento elettrico a regime	Power consumption	max 350 W / 140 W / 77 W
Ventilatore aria	Heating fan	250 m ³ /h + 160 m ³ /h + 160 m ³ /h
Regolazione e funzionamento	Adjustment and functioning	WIFI - APP
Peso netto/lordo	Net weight/gross	153 kg / 180 kg
Dati logistici LxDxH	logistic datas LxDxH	78*77*163 cm

OPTIONAL

50771

Telecomando radio/ Radio remote control

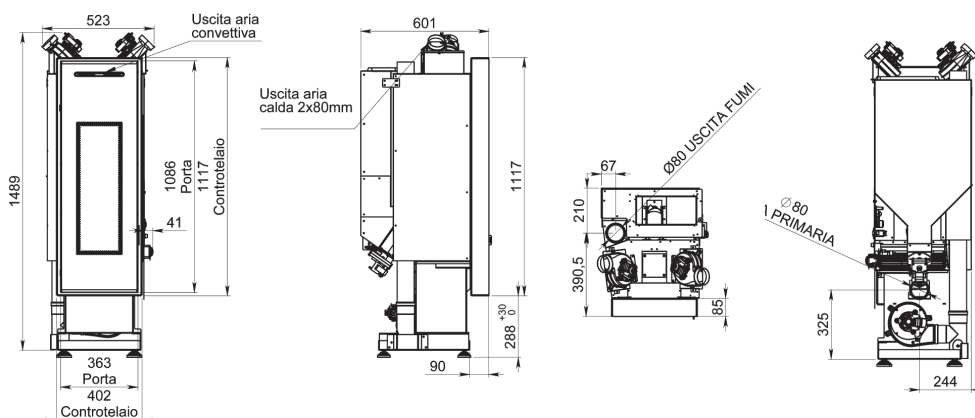
32352

Cornice di finitura/ Aesthetic frame
L 465 x H 1180 x P 30 misura esterna / outside size

52543

Caricatore pellet Deluxe, per caricamento pellet frontale, posteriore, superiore o laterale.

Deluxe pellet charger, for loading pellet in front, back, top or side.





STARFIRE M17 - 51502

Monoblocco pellet STARFIRE M17 - ELETTRONICA DX, ESTRATTORE SX.
Pellet Fireplace STARFIRE M17 PCB RIGHT SIDE, SMOKE EXTRACTOR RIGHT SIDE

ITALY ONLY



DM186
5 STELLE



CONTO
TERMICO



VENTILAZIONE
ON BOARD
FAN



CANALIZZAZIONE
DI SERIE
DUCTED



USCITA FUMI VERTICALE
UPPER SMOKE
EXHAUST



CANDELETTA AL QUARZO
QUARZ CANDLE



ELETTRONICA DX
PCB RIGHT SIDE

STARFIRE M17 (uscita fumi verticale Ø80)

Combustibile	<i>Fuel</i>	Pellet
Potenza Nominale / Ridotta	<i>Min. thermal output</i>	Nom. 10,4 / Min. 5,2 kW
Rendimento	<i>Efficiency</i>	max 93,2% / min 94,7%
Consumo orario pellet	<i>Hourly pellet consumption</i>	max -2,4 Kg/h / min -1,2 Kg/h
Autonomia	<i>Autonomy</i>	max -18 h / min -38 h
Capacità serbatoio	<i>Tank capacity</i>	45 Kg
Assorbimento elettrico	<i>Power consumption</i>	max 350 W / 116 / 79 W
Ventilatore aria	<i>Heating fan</i>	250 m ³ /h + 160 m ³ /h + 160 m ³ /h
Regolazione e funzionamento	<i>Adjustment and functioning</i>	Radio comando / Radio remote control
Peso netto/lordo	<i>Net weight/gross</i>	160 Kg / 187 Kg
Dati logistici LxPxH	<i>logistic datas LxDxH</i>	78*77*163 cm

OPTIONAL

50771

Telecomando radio/ Radio remote control

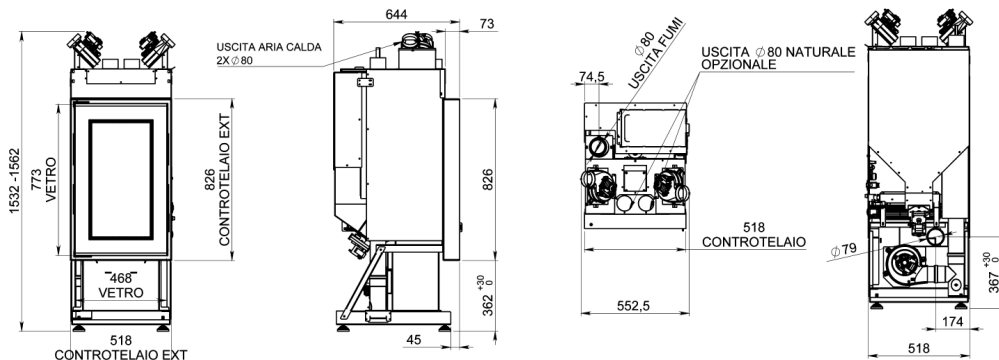
32353

Cornici di finitura/ Aesthetic frame
L 890 x H 580 x P 30 misura esterna / outside size

52543

Caricatore pellet Deluxe, per caricamento
pellet frontale, posteriore, superiore o
laterale.

*Deluxe pellet charger, for loading
pellet in front, back, top or side.*





STARFIRE M18 - 51503

Monoblocco pellet STARFIRE M18 ELETTRONICA DX, ESTRATTORE SX.

Pellet Fireplace STARFIRE M18 PCB RIGHT SIDE, SMOKE EXTRACTOR RIGHT SIDE

ITALY ONLY



DM186
4 STELLE

CONTO
TERMICO



VENTILAZIONE
ON BOARD
FAN

CANALIZZAZIONE
DI SERIE
DUCTED

ELETTRONICA DX
PCB RIGHT SIDE

USCITA FUMI VERTICALE
UPPER SMOKE
EXHAUST

CANDELETTA AL QUARZO
QUARZ CANDLE

STARFIRE M18 (uscita fumi verticale Ø80)

Combustibile	<i>Fuel</i>	Pellet
Potenza Nominale / Ridotta	<i>Min. thermal output</i>	Nom. 14,4 / Min. 5,2 kW
Rendimento	<i>Efficiency</i>	max 92,2% / min 94,7%
Consumo orario pellet	<i>Hourly pellet consumption</i>	max -2,5 Kg/h / min -1,2 Kg/h
Autonomia	<i>Autonomy</i>	max -13 h / min -39 h
Capacità serbatoio	<i>Tank capacity</i>	45 Kg
Assorbimento elettrico	<i>Power consumption</i>	max 350 W / 116 / 79 W
Ventilatore aria	<i>Heating fan</i>	250 m ³ /h + 160 m ³ /h + 160 m ³ /h
Regolazione e funzionamento	<i>Adjustment and functioning</i>	Radio comando / Radio remote control
Peso netto/lordo	<i>Net weight/gross</i>	160 Kg / 187 Kg
Dati logistici LxPxH	<i>logistic datas LxDxH</i>	78*77*163 cm

OPTIONAL

50771

Telecomando radio/ Radio remote control

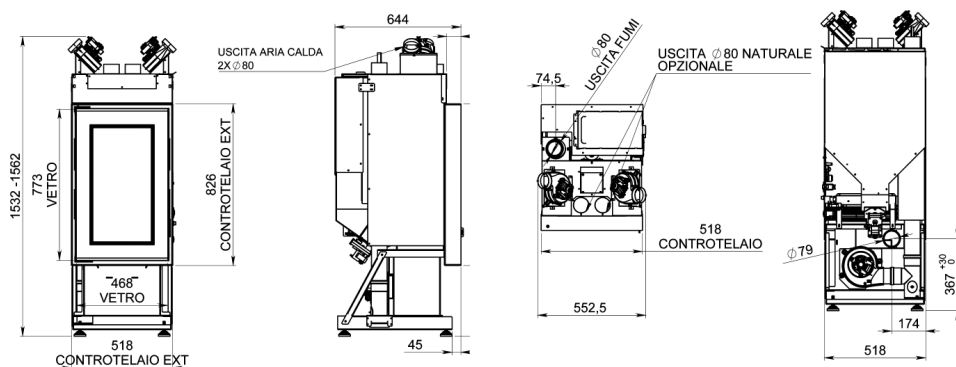
32353

Cornici di finitura/ Aesthetic frame
L 890 x H 580 x P 30 misura esterna / outside size

52543

Caricatore pellet Deluxe, per caricamento
pellet frontale, posteriore, superiore o
laterale.

*Deluxe pellet charger, for loading
pellet in front, back, top or side.*





SIRIUS 11 51404 DX - RIGHT 51432 SX - LEFT

Monoblocco pellet SIRIUS 11, carico, elettronica, ventilatore aria laterale ed estractore fumi a DESTRA o SINISTRA.
Pellet Fireplace SIRIUS 11 pellet loading, electronic, side fan and smoke extractor to the RIGHT OR LEFT.

ITALY ONLY



DM186
4 STELLE

CONTO
TERMICO



ESTRATTORE +
ELETTRONICA DX o SX
SMOKE EXTRACTOR AND
PCB RIGHT SIDE



VENTILAZIONE
-
ON BOARD FAN



CONVEZIONE NATURALE
FINO A POTENZA 3
NATURAL CONVECTION
TILL POWER 3



CANALIZZAZIONE
DI SERIE
-
DUCTED

SIRIUS 11

Combustibile	Fuel	Pellet
Potenza Nominale / Ridotta	Min. thermal output	Nom. 10,7 / Min. 5,2 kW
Rendimento	Efficiency	max 90,3% / min 91,9%
Consumo orario pellet	Hourly pellet consumption	max -2,5 Kg/h / min -1,2 Kg/h
Autonomia	Autonomy	max -20 h / min -40 h
Capacità serbatoio (± 20 %)*	Tank capacity	60 Kg
Assorbimento elettrico a regime	Power electrical worker operatively	max 360 W / 110 / 52 W
Ventilatore aria	Heating fan	260 m ³ /h + 160 m ³ /h
Regolazione e funzionamento	Adjustment and functioning	Radio comando / Radio remote control
Peso netto/lordo	Net weight/gross	137 Kg / 177 Kg
Dati logistici LxPxH	logistic datas LxDxH	120*80*156

OPTIONAL

50771

Telecomando radio/ Radio remote control

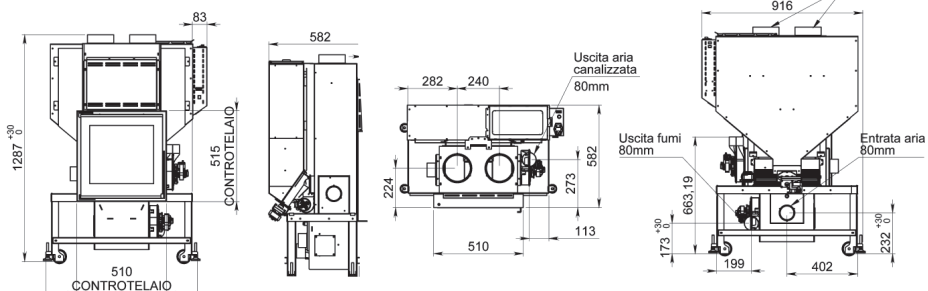
29784

Cornici di finitura / Aesthetic frame
558 x H 562 x P 30 misura esterna / outside

52543

Caricatore pellet Deluxe, per caricamento
pellet frontale, posteriore, superiore o
laterale.

Deluxe pellet charger, for loading
pellet in front, back, top or side.





APOLLO M16 51400 DX - RIGHT 51081 SX - LEFT

Monoblocco pellet, carico, elettronica, ventilatore aria laterale ed estraattore fumi a DESTRA o SINISTRA.
Pellet Fireplace pellet loading, electronic, side fan and smoke extractor to the RIGHT OR LEFT.

ITALY ONLY



DM186
4 STELLE



CONTO
TERMICO



CONVEZIONE NATURALE
FINO A POTENZA 3
NATURAL CONVECTION
TILL POWER 3



VENTILAZIONE
ON BOARD
FAN



CANALIZZAZIONE
D1 SERIE
DUCTED

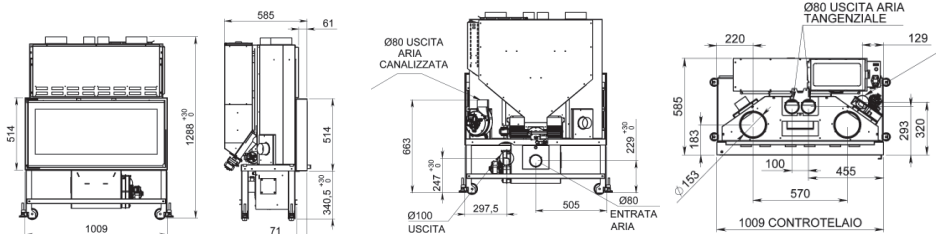


ESTRATTORE +
ELETTRONICA DX o SX
SMOKE EXTRACTOR AND
PCB RIGHT SIDE



APOLLO M16

Combustibile	Fuel	Pellet
Potenza Nominale / Ridotta	Min. thermal output	Nom. 15,0 / Min. 6,9 kW
Rendimento	Efficiency	max 90,8% / min 93,7%
Consumo orario pellet	Hourly pellet consumption	max -3,6 Kg/h / min -1,6 Kg/h
Autonomia	Autonomy	max -17 h / min -38 h
Capacità serbatoio	Tank capacity	60 Kg
Absorbimento elettrico	Power consumption	max 480 W / 150 / 74 W
Ventilatore aria	Heating fan	260 m ³ /h + 160 m ³ /h
Regolazione e funzionamento	Adjustment and functioning	Radio comando / Radio remote control
Peso netto/lordo	Net weight/gross	185 Kg / 225 Kg
Dati logistici LxPxH	logistic datas LxDxH	120*80*156



OPTIONAL

51491

Kit ventilatori superiori plus, composto da 2 ventilatori centrifughi
Kit ventilation plus: it consists of 2 centrifugal fans

50771

Telecomando radio/ Radio remote control

35432

Kit refrattari interni, colore nero.
Internal refractory kit, black color.

52543

Caricatore pellet Deluxe, per caricamento pellet frontale, posteriore, superiore o laterale.

Deluxe pellet charger, for loading pellet in front, back, top or side.

29783

Cornici di finitura / Aesthetic frame
L 998 x H 502 x P 30 misura esterna / outside size

29793

Cornici di finitura / Aesthetic frame
L 1058 x H 562 x P 70 misura esterna / outside



ORION 13 51402 DX - RIGHT 51082 SX - LEFT

Monoblocco pellet, carico, elettronica, ventilatore aria laterale ed estrattore fumi a DESTRA o SINISTRA.
Pellet Fireplace pellet loading, electronic, side fan and smoke extractor to the RIGHT OR LEFT.

ITALY ONLY



DM186
4 STELLE
CONTO
TERMICO



CONVEZIONE NATURALE
FINO A POTENZA 3
NATURAL CONVECTION
TILL POWER 3



VENTILAZIONE
ON BOARD
FAN



CANALIZZAZIONE
DI SERIE
DUCTED



ESTRATTORE +
ELETTRONICA DX o SX
RIGHT OR LEFT
SMOKE EXTRACTOR
+ PCB BOARDS

ORION 13

Combustibile	Fuel	Pellet
Potenza Nominale / Ridotta	Min. thermal output	Nom. 13,0 / Min. 6,4 kW
Rendimento	Efficiency	max 90,3% / min 91,9%
Consumo orario pellet	Hourly pellet consumption	max -3,0 Kg/h / min -1,5 Kg/h
Autonomia	Autonomy	max -20 h / min -40 h
Capacità serbatoio	Tank capacity	60 Kg
Assorbimento elettrico	Power consumption	max 360 W / 110 / 52 W
Ventilatore aria	Heating fan	260 m ³ /h + 160 m ³ /h
Regolazione e funzionamento	Adjustment and functioning	Radio comando / Radio remote control
Peso netto/lordo	Net weight/gross	173 Kg / 213 Kg
Dati logistici LxPxH	logistic datas LxDxH	120*80*156

OPTIONAL

50771

Telecomando radio/ Radio remote control

51491

Kit ventilatori superiori plus, composto da 2 ventilatori centrifughi./ Kit ventilation plus: it consists of 2 centrifugal fans

52543

Caricatore pellet Deluxe, per caricamento pellet frontale, posteriore, superiore o laterale./ Deluxe pellet charger, for loading pellet in front, back, top or side.

35431

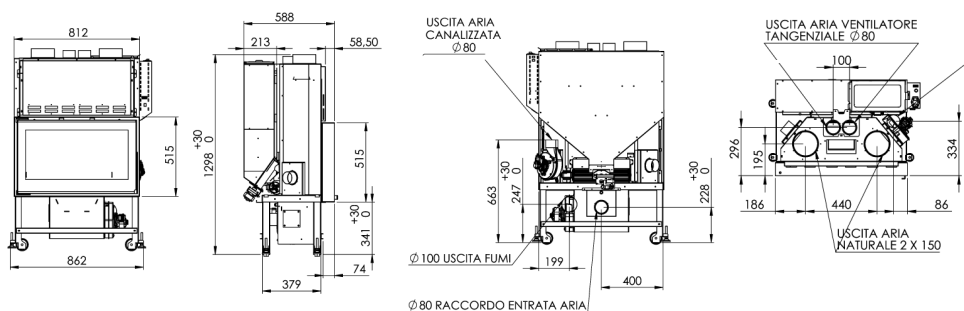
Kit refrattari interni, colore nero.
Internal refractory kit, black color.

29782

Cornici di finitura/ Aesthetic frame
L 860 x H 562 x P 30 misura esterna / outside size

29792

Cornici di finitura/ Aesthetic frame
L 860 x H 562 x P 70 misura esterna / outside size





CORNER M16 50041 DX - RIGHT 50042 SX - LEFT

Monoblocco pellet angolare CORNER M16 sinistro, elettronica ed estrattore fumi a sinistra o destra. **Completo di cornice di finitura da 3 cm.**
 Corner pellet fireplace CORNER M16 left or right, electronic and smoke extractor to the left. **Complete with 3 cm finishing.**

ITALY ONLY



CONVEZIONE NATURALE
FINO A POTENZA 3
NATURAL CONVECTION
TILL POWER 3



ESTRATTORE +
ELETTRONICA DX
o SX
RIGHT OR LEFT
SMOKE EXTRACTOR
+ PCB BOARDS



CANALIZZAZIONE
DI SERIE
DUCTED



CORNICI DI FINITURA
FINISHING
FRAME



CANDELETTA AL QUARZO
QUARZ CANDLE

CORNER M16

Combustibile	Fuel	Pellet
Potenza Nominale / Ridotta	Min. thermal output	Nom. 15,0 / Min. 6,9 kW
Rendimento	Efficiency	max 90,8% / min 93,7%
Consumo orario pellet	Hourly pellet consumption	max -3,6 Kg/h / min -1,6 Kg/h
Autonomia	Autonomy	max -16 h / min -37 h
Capacità serbatoio	Tank capacity	60 Kg
Assorbimento elettrico	Power consumption	max 480 W / 150 / 74 W
Ventilatore aria	Heating fan	160 m ³ /h + 160 m ³ /h
Regolazione e funzionamento	Adjustment and functioning	Radio comando / Radio remote control
Peso netto/lordo	Net weight	180 Kg / 220 KG
Dati logistici LxPxH	logistic datas LxDxH	120*80*156

OPTIONAL

50771

Telecomando radio/ Radio remote control

52543

Caricatore pellet Deluxe, per caricamento pellet frontale, posteriore, superiore o laterale.

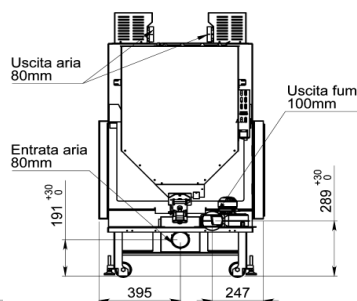
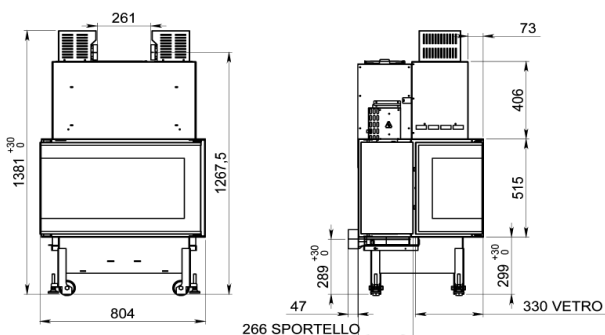
Deluxe pellet charger, for loading pellet in front, back, top or side.

OPTIONAL 50042 CORNER SX 50660

Supplemento spostamento a destra di: elettronica, estrattore fumi
Surcharge displacement to the right of: electronic, smoke extractor

OPTIONAL 50041 CORNER DX 50661

Supplemento spostamento a sinistra di: elettronica, estrattore fumi
Surcharge displacement to the left of: electronic, smoke extractor





FRATAC VM16 51304 DX - RIGHT 50197 SX - LEFT

Monoblocco pellet FRATAC V M16 (3 vetri), elettronica ed estrattore fumi a destra o sinistra. **Completo di cornice di finitura a 3 cm.**
Pellet fireplace FRATAC V M16 (3 glasses), electronic and smoke extractor to the right or left. **Complete with 3 cm finishing.**

ITALY ONLY



DM186 CONTO
4 STELLE TERMICO



CONVEZIONE NATURALE
FINO A POTENZA 3
NATURAL CONVECTION
TILL POWER 3



ESTRATTORE +
ELETTRONICA DX o SX
RIGHT OR LEFT SMOKE
EXTRACTOR + PCB BOARDS



CANALIZZAZIONE
DI SERIE
DUCTED



CORNICI DI FINITURA
FINISHING
FRAME



CANDELETTA AL QUARZO
QUARZ CANDLE

FRATAC V M16

Combustibile	Fuel	Pellet
Potenza Nominale / Ridotta	Min. thermal output	Nom. 15,0 / Min. 6,9 kW
Rendimento	Efficiency	max 90,8% / min 93,7%
Consumo orario pellet	Hourly pellet consumption	max -3,6 Kg/h / min -1,6 Kg/h
Autonomia	Autonomy	max -16 h / min -37 h
Capacità serbatoio	Tank capacity	60 Kg
Assorbimento elettrico	Power consumption	max 480 W / 150 / 74 W
Ventilatore aria	Heating fan	160 m ³ /h + 160 m ³ /h
Regolazione e funzionamento	Adjustment and functioning	Radio comando / Radio remote control
Peso netto	Net weight	193 Kg / 233 kg
Dati logistici LxPxH	logistic datas LxDxH	120*80*156

OPTIONAL

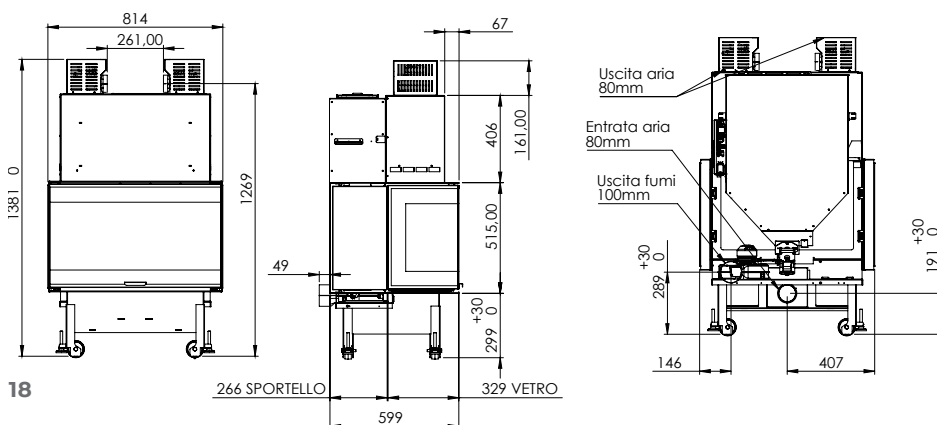
50771

Telecomando radio/ Radio remote control

52543

Caricatore pellet Deluxe, per caricamento pellet frontale, posteriore, superiore o laterale.

Deluxe pellet charger, for loading pellet in front, back, top or side.





PERSEO 6 - 51030

Inserto pellet PERSEO 6, estraibile su guide
Pellet insert PERSEO 6, extractable on guides.



ITALY ONLY

DM186 CONTO
 4 STELLE TERMICO



VENTILAZIONE
 ON BOARD
 FAN

PERSEO 6

Combustibile	<i>Fuel</i>	Pellet
Potenza Nominale / Ridotta	<i>Min. thermal output</i>	nom. 6,2 kW / min. 2,8 kW
Rendimento	<i>Efficiency</i>	max 91,2% / min 92,2%
Consumo orario pellet	<i>Hourly pellet consumption</i>	max 1,5 kg / min 0,6 kg
Autonomia	<i>Autonomy</i>	max 7 h / min 16 h
Capacità serbatoio	<i>Tank capacity</i>	9 kg
Assorbimento elettrico	<i>Power consumption</i>	Max 350 W / 52 / 33 W
Ventilatore aria	<i>Heating fan</i>	280 m ³ /h
Regolazione e funzionamento	<i>Adjustment and functioning</i>	WIFI - APP
Peso netto/lordo	<i>Net weight/gross</i>	91,2 kg / 93,0 kg
Dati logistici LxDxH	<i>logistic datas LxDxH</i>	85*68*72

OPTIONAL

50771

Telecomando radio/ *Radio remote control*

52810

Cassetto caricamento pellet
Pellet loading drawer

52605 + 52602

Kit caricatore pellet per caricamento
 frontale, posteriore, laterale.

*Pellet charger kit, for loading pellet in
 front, back or side.*

53236

Kit raccordo entrata aria esterna Ø 80 mm
External air inlet fitting kit Ø 80 mm

50540

Tavolino regolabile per inserti
Adjustable table for inserts

Cornici di finitura / *Finishing frames :*
 (Dettagli nella pagina accessori / *details at
 accessories page*)

32537

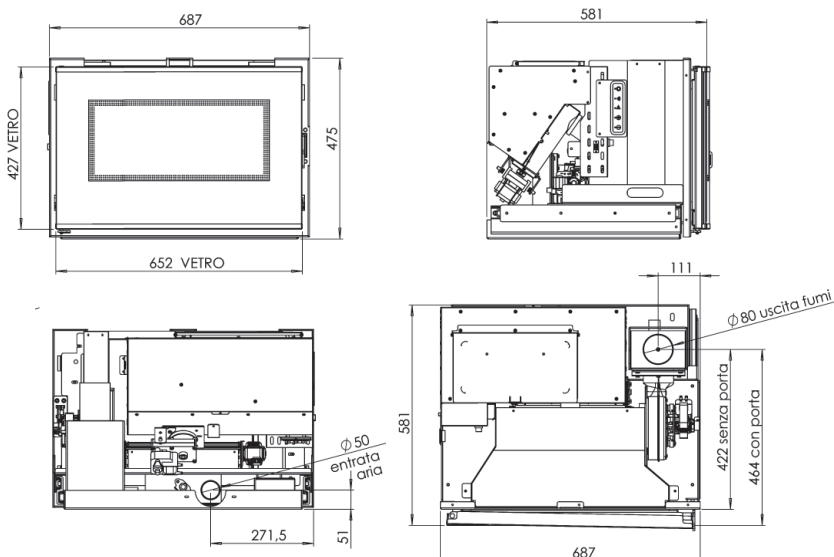
32539

32538

32547

32546

32545





DRACO 8 - 51536

Inserto pellet DRACO 8, estraibile su guide
Pellet insert DRACO 8, extractable on guides



VENTILAZIONE
 ON BOARD FAN

DRACO 8

Combustibile	Fuel	Pellet
Potenza Nominale / Ridotta	Min. thermal output	nom. 7,8 kW / min. 3,8 kW
Rendimento	Efficiency	max 91,2% / min 92,2%
Consumo orario pellet	Hourly pellet consumption	max 1,8 kg / min 0,8 kg
Autonomia	Autonomy	max 8 h / min 19 h
Capacità serbatoio	Tank capacity	15 kg
Assorbimento elettrico	Power consumption	Max 350 W / 47 / 33 W
Ventilatore aria	Heating fan	165 m ³ /h
Regolazione e funzionamento	Adjustment and functioning	WIFI - APP
Peso netto/lordo	Net weight/gross	108 kg / 121KG
Dati logistici LxPxH	logistic datas LxDxH	85*68*72

OPTIONAL

50771

Telecomando radio/ *Radio remote control*

52607

Cassetto caricamento pellet
Pellet loading drawer

52606 + 52602

Kit caricatore pellet per caricamento
 frontale, posteriore, laterale.
*Pellet charger kit, for loading pellet in
 front, back or side.*

53236

Kit raccordo entrata aria esterna Ø 80 mm
External air inlet fitting kit Ø 80 mm

50540

Tavolino regolabile per inserti
Adjustable table for inserts

Cornici di finitura / *Finishing frames :*
 (Dettagli nella pagina accessori / *details at
 accessories page*)

32548

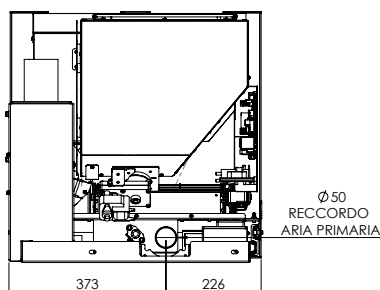
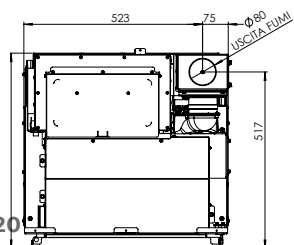
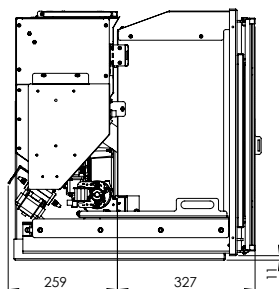
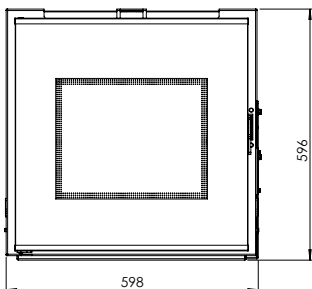
32549

32550

32551

32552

32553





GERICO 9 - 51048

Inserto pellet GERICO 9, estraibile su guide, kit canalizzazione optional
Pellet insert GERICO 9, extractable on guides. optional ducting kit

ITALY ONLY



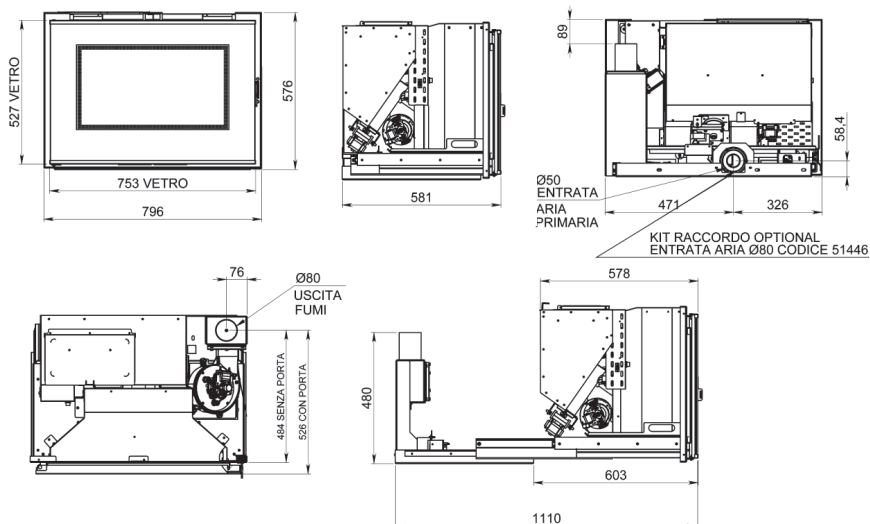
DM186 CONTO
4 STELLE TERMICO



VENTILAZIONE
ON BOARD
FAN

GERICO 9

Combustibile	<i>Fuel</i>	Pellet
Potenza Nominale / Ridotta	<i>Min. thermal output</i>	nom. 9,8 kW / min. 4,1 kW
Rendimento	<i>Efficiency</i>	max 92,7% / min 94,5%
Consumo orario pellet	<i>Hourly pellet consumption</i>	max 2,2 kg / min 0,9 kg
Autonomia	<i>Autonomy</i>	max 6,5 h / min 16,5 h
Capacità serbatoio	<i>Tank capacity</i>	15 kg
Assorbimento elettrico	<i>Power consumption</i>	Max 350 W / 134 / 74 W
Ventilatore aria	<i>Heating fan</i>	210 m ³ /h + 210 m ³ /h
Regolazione e funzionamento	<i>Adjustment and functioning</i>	Radio comando / Radio remote control
Peso netto/lordo	<i>Net weight/gross</i>	130 kg / 133KG
Dati logistici LxPxH	<i>logistic datas LxDxH</i>	80*85*72



OPTIONAL

50771

Telecomando radio / *Radio remote control*

52809

Cassetto caricamento pellet
Pellet loading drawer

52600 + 52606

Kit caricatore pellet per caricamento frontale, posteriore, laterale
Pellet charger kit, for loading pellet in front, back or side

52601

Kit canalizzazione aria
Ducting kit

52604

Kit completo carico pellet e canalizzazione
Complete pellet loading and ducting kit

53236

Kit raccordo entrata aria esterna Ø 80 mm
External air inlet fitting kit Ø 80 mm

50540

Tavolino regolabile per inserti
Adjustable table for inserts

Cornici di finitura / *Finishing frames* :
(Dettagli nella pagina accessori / *details at accessories page*)

32524

32523

32532

32544

32543

32542



MARLIN 500 AC 51464 DX - RIGHT 51466 SX - LEFT

Monoblocco pellet idro MARLIN 500 (MH27) AC, **componenti a destra o sinistra**, elettronica TIEMME.
Hydro pellet Fireplace MARLIN 500 (MH27) AC,, components to the **right or left**, TIEMME electronic.

ITALY ONLY



DM186

CONTO
TERMICO



ESTRATTORE +ELETTRONICA DX o SX
RIGHT OR LEFT SMOKE EXTRACTOR
+ PCB BOARDS



TELECOMANDO RADIO
RADIO REMOTE CONTROL



IMPIANTO RISCALDANTE
HEATING SYSTEM

MARLIN 500 AC [dx] - MARLIN 500 AC [sx]

Combustibile	Fuel	Pellet
Potenza Nominale / Ridotta	Min. thermal output	Nom. 27,0 / Min. 7,6 kW
Potenza termica resa all'acqua	Power given back to the water	max 18,0 kW / min 4,4 kW
Potenza termica all'ambiente	Power given back to the room	max 9,0 kW / min 3,2 kW
Rendimento	Efficiency	max 90,5 % / min 94,5%
Consumo orario pellet	Hourly pellet consumption	max -6,0 Kg/h / min -1,6 Kg/h
Autonomia	Autonomy	max -15 h / min -56 h
Capacità serbatoio pellet	Tank capacity	90 Kg
Pressione massima d'esercizio	Max working pressure	2,0 bar
Assorbimento elettrico	Power consumption	max 470 W / 105 / 79 W
Peso netto / lordo	Net weight / gross	212 Kg / 254 kg
Dati logistici LxPxH	logistic datas LxDxH	120*80*163

OPTIONAL

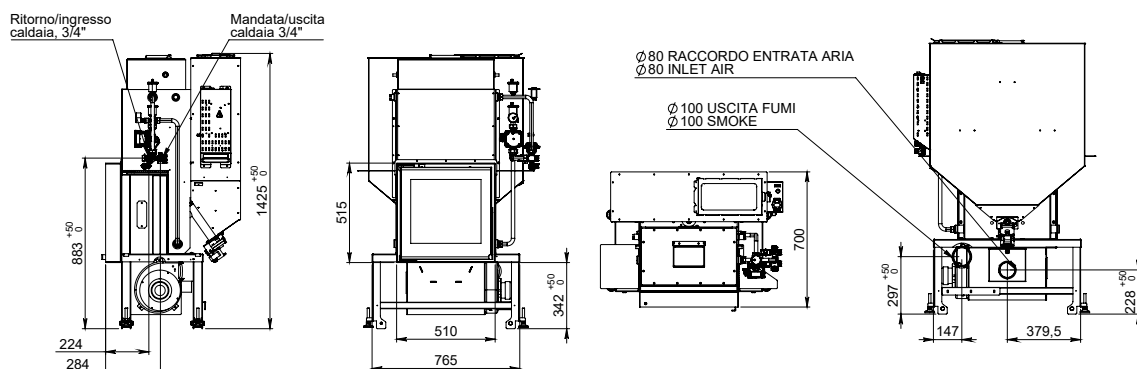
29784

Cornici di finitura / Aesthetic frame
558 x H 562 x P 30 misura esterna / outside

52543

Caricatore pellet Deluxe, per caricamento
pellet frontale, posteriore, superiore o
laterale.

Deluxe pellet charger, for loading
pellet in front, back, top or side.





MARLIN 1000 AC 51460 DX - RIGHT 51462 SX - LEFT

Monoblocco pellet idro MARLIN 1000 (MH27) AC, componenti a sinistra o destra, elettronica TIEMME.
Hydro pellet Fireplace MARLIN 1000 (MH27) AC, components to the left OR RIGHT, TIEMME electronic.



MARLIN 1000 ACS 51455 DX - RIGHT 51457 SX - LEFT

Monoblocco pellet idro MARLIN 1000 (MH27) ACS, compreso di kit acqua calda per impianto riscaldamento + sanitari, componenti a destra o sinistra, elettronica TIEMME.
Hydro pellet Fireplace MARLIN 1000 (MH27) ACS, included kit hot water for heating system and DHW DOMESTIC HOT WATER, components to the right or left, TIEMME electronic.

51460 DX - RIGHT
51462 SX - LEFT



IMPIANTO RISCALDANTE
HEATING SYSTEM

51455 DX - RIGHT
51457 SX - LEFT



CALORIFERI + SANITARI
RADIATOR + TAP

MARLIN 1000 AC (dx) - MARLIN 1000 AC (sx)

Combustibile	Fuel	Pellet
Potenza Nominale / Ridotta	Min. thermal output	Nom. 27,0 / Min. 7,6 kW
Potenza termica resa all'acqua	Power given back to the water	max 18,0 kW / min 4,4 kW
Potenza termica all'ambiente	Power given back to the room	max 9,0 kW / min 3,2 kW
Rendimento	Efficiency	max 90,5 % / min 94,5%
Consumo orario pellet	Hourly pellet consumption	max -6,0 Kg/h / min -1,6 Kg/h
Autonomia	Autonomy	max -15 h / min -56 h
Capacità serbatoio pellet	Tank capacity	90 Kg
Pressione massima d'esercizio	Max working pressure	2,0 bar
Assorbimento elettrico	Power consumption	max 470 W / 105 / 79 W
Peso netto / lordo	Net weight / gross	233 Kg / 275 kg
Dati logistici LxPxH	logistic datas LxDxH	120*80*163

OPTIONAL

29783

Cornici di finitura / Aesthetic frame
L 998 x H 502 x P 30 misura esterna / outside size

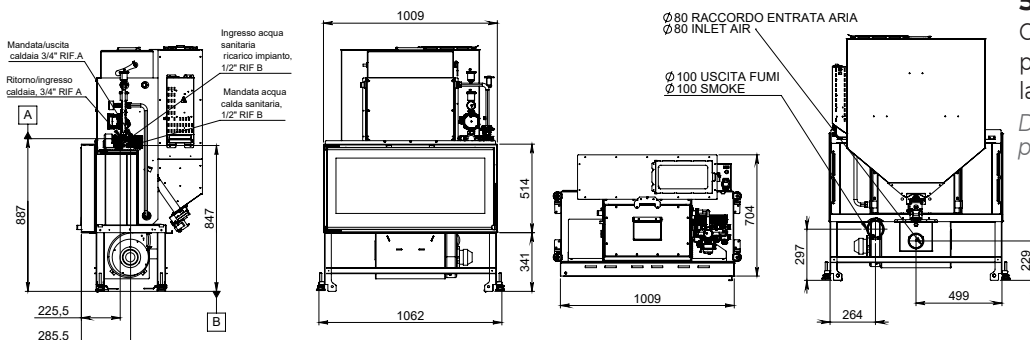
29793

Cornici di finitura / Aesthetic frame
L 1058 x H 562 x P 70 misura esterna / outside

52543

Caricatore pellet Deluxe, per caricamento pellet frontale, posteriore, superiore o laterale.

Deluxe pellet charger, for loading pellet in front, back, top or side.





PELLET STOVE STUFF



GEMMA 9 - ● 51504 | Legno - Wood ● 51505 | Corten
● 51506 | Pietra - Stone

Stufa Pellet GEMMA canalizzabile con optional - **Uscita fumi superiore anche coassiale di serie / Posteriore con kit optional**
Pellet Stove GEMMA flue smoke output as well as coaxial both standard / rear with optional kit

ITALY ONLY

A+ **DM186** **CONTO**
5 STELLE TERMICO

BRACIERE AUTOPULENTE
SELF-CLEANING BRAZIER

TELECOMANDO RADIO
RADIO REMOTE CONTROL

VENTILAZIONE
ON BOARD FAN

CONVEZIONE NATURALE
FINO A POTENZA 3
NATURAL CONVECTION
TILL POWER 3

50 Pa
CAMERA STAGNA
SEALED CHAMBER

GEMMA

Combustibile	<i>Fuel</i>	Pellet
Potenza Nominale / Ridotta	<i>Min. thermal output</i>	Nom. 9,2 / Min. 4,3 kW
Rendimento	<i>Efficiency</i>	max 91,5% / min 94,5%
Consumo orario pellet	<i>Hourly pellet consumption</i>	max -2,1 Kg/h / min -0,9 Kg/h
Autonomia	<i>Autonomy</i>	max -7 h / min -16 h
Capacità serbatoio	<i>Tank capacity</i>	15 Kg
Assorbimento elettrico	<i>Power consumption</i>	max 320 W / 60 - 33 W
Ventilatore aria	<i>Heating fan</i>	250 + 130 m ³ /h
Regolazione e funzionamento	<i>Adjustment and functioning</i>	Radio comando / Radio remote control
Peso netto/Lordo	<i>Net weight/Gross</i>	140 Kg / 153 Kg
Dati logistici LxPxH	<i>logistic datas LxDxH</i>	105*40*118

USCITA FUMI COASSIALE
COAXIAL FLUE OUTPUT

CANDELETTA AL QUARZO
QUARZ CANDLE

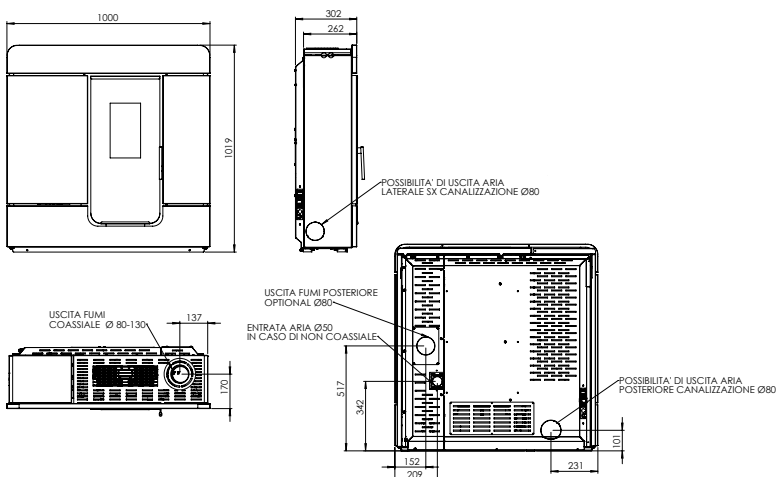
OPTIONAL

52504
WIFI

52612
OPTIONAL: kit canalizzazione aria calda laterale sx o posteriore da 130 m³/h
OPTIONAL: hot air ducting left side or back side kit from 130 m³/h

53240
OPTIONAL: kit uscita fumi posteriore
OPTIONAL: rear smoke output kit

53152
OPTIONAL: sonda radio canalizzazione
OPTIONAL: ducting radio probe





VEGA 9 - ○ 51484 | Bianco - White ● 51486 | Antracite - Anthracite
● 51485 | Grigio - Gray ● 51481 | Glicine - Wisteria

Stufa Pellet VEGA canalizzabile con optional - **Uscita fumi superiore anche coassiale di serie / Posteriore con kit optional**
Pellet Stove VEGA upper smoke output as well as coaxial both standard / rear with optional kit, ductable with optional.

ITALY ONLY

A+ **DM186** **CONTO**
5 STELLE TERMICO

BRACIERE AUTOPULENTE
SELF-CLEANING BRAZIER

TELECOMANDO RADIO
RADIO REMOTE CONTROL

VENTILAZIONE
ON BOARD FAN

CONVEZIONE NATURALE
FINO A POTENZA 3
NATURAL CONVECTION
TILL POWER 3

CAMERA STAGNA
SEALED CHAMBER

VEGA 9 [braciere autopulente - verticale]

Combustibile	Fuel	Pellet
Potenza Nominale / Ridotta	Min. thermal output	Nom. 9,2 / Min. 4,3 kW
Rendimento	Efficiency	max 91,5% / min 94,5%
Consumo orario pellet	Hourly pellet consumption	max -2,1 Kg/h / min -0,9 Kg/h
Autonomia	Autonomy	max -7 h / min -16 h
Capacità serbatoio	Tank capacity	15 Kg
Assorbimento elettrico	Power consumption	max 320 W / 60 - 33 W
Ventilatore aria	Heating fan	250 + 130 m³/h
Regolazione e funzionamento	Adjustment and functioning	Radio comando / Radio remote control
Peso netto/Lordo	Net weight/Gross	140 Kg / 153 Kg
Dati logistici LxPxH	logistic datas LxDxH	105*40*118

USCITA FUMI COASSIALE
COAXIAL FLUE OUTPUT

CANDELETTA AL QUARZO
QUARZ CANDLE

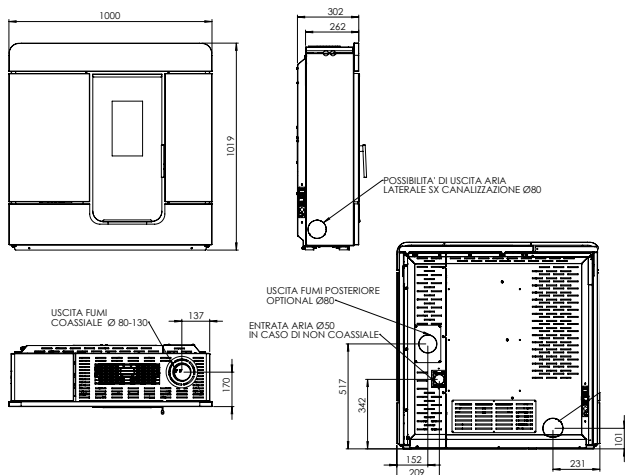
OPTIONAL

52504
WIFI

52612
OPTIONAL: kit canalizzazione aria calda laterale sx o posteriore da 130 m³/h
OPTIONAL: hot air ducting left side or back side kit from 130 m³/h

53240
OPTIONAL: kit uscita fumi posteriore
OPTIONAL: rear smoke output kit

53152
OPTIONAL: sonda radio canalizzazione
OPTIONAL: ducting radio probe





MIZARD9 - ○ 51480 | Bianco - White ● 51482 | Antracite - Anthracite
 ● 51483 | Grigio - Gray ● 51487 | Glicine - Wisteria

Stufa Pellet MIZARD - Uscita fumi superiore anche coassiale di serie / Posteriore con kit optional

Pellet Stove MIZARD upper smoke output as well as coaxial both standard / rear with optional kit, ductable with optional.

ITALY ONLY

A+ DM186
 5 STELLE
 CONTO TERMICO

BRACIERE AUTOPULENTE
 SELF-CLEANING BRAZIER

TELECOMANDO RADIO
 RADIO REMOTE CONTROL

VENTILAZIONE
 ON BOARD FAN

CONVEZIONE NATURALE
 FINO A POTENZA 3
 NATURAL CONVECTION
 TILL POWER 3

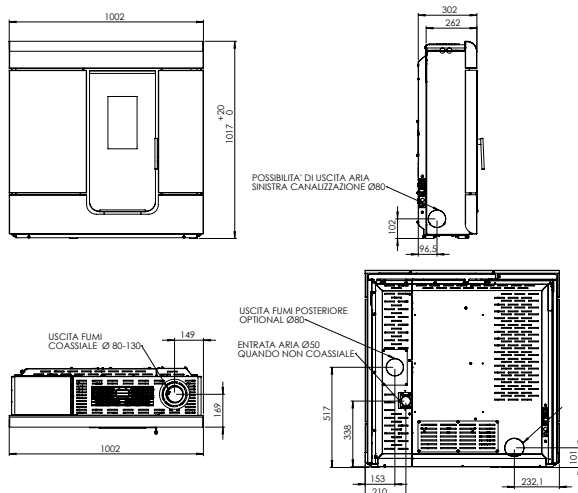
50 Pa
 CAMERA STAGNA
 SEALED CHAMBER

MIZARD 9 (braciere autopulente - verticale)

Combustibile	Fuel	Pellet
Potenza Nominale / Ridotta	Min. thermal output	Nom. 9,2 / Min. 4,3 kW
Rendimento	Efficiency	max 91,5% / min 94,5%
Consumo orario pellet	Hourly pellet consumption	max -2,1 Kg/h / min -0,9 Kg/h
Autonomia	Autonomy	max -7 h / min -16 h
Capacità serbatoio	Tank capacity	15 Kg
Assorbimento elettrico	Power consumption	max 320 W / 60 - 33 W
Ventilatore aria	Heating fan	250 + 130 m³/h
Regolazione e funzionamento	Adjustment and functioning	Radio comando / Radio remote control
Peso netto/Lordo	Net weight/Gross	140 Kg / 153 Kg
Dati logistici LxPxH	logistic datas LxDxH	105*40*118

USCITA FUMI COASSIALE
 COAXIAL FLUE OUTPUT

CANDELETTA AL QUARZO
 QUARZ CANDLE



OPTIONAL

52504

WIFI

52612

OPTIONAL: kit canalizzazione aria calda laterale sx o posteriore da 130 m³/h
OPTIONAL: hot air ducting left side or back side kit from 130 m³/h

53240

OPTIONAL: kit uscita fumi posteriore
OPTIONAL: rear smoke output kit

53152

OPTIONAL: sonda radio canalizzazione
OPTIONAL: ducting radio probe



DIADEMA 6 - CONVEZIONE NATURALE / NATURAL CONVECTION

- 51511 | Bianco - White ● 51513 | Nero - Black
- 51512 | Grigio - Gray

DIADEMA 8 - VENTILATA / VENTILATED

- 51514 | Bianco - White ● 51516 | Nero - Black
- 51515 | Grigio - Gray

DIADEMA 10 - VENTILATA / VENTILATED

- 51517 | Bianco - White ● 51519 | Nero - Black
- 51518 | Grigio - Gray


Stufa Pellet DIADEMA - **Uscita fumi superiore anche coassiale di serie**
 Pellet Stove DIADEMA - **Upper smoke output as well as coaxial both standard**


ITALY ONLY


A+ **DM186** **CONTO**
5 STELLE **TERMICO**

 **BRACIERE AUTOPULENTE**
 SELF-CLEANING BRAZIER

 **USCITA FUMI COASSIALE**
 COAXIAL FLUE OUTPUT

 **SOLO DIADEMA 8 E 10**
 DIADEMA 8 E 10 ONLY
VENTILAZIONE
 ON BOARD FAN

 **SOLO DIADEMA 10**
 DIADEMA 10 ONLY
CONVEZIONE NATURALE
 FINO A POTENZA 3
 NATURAL CONVECTION
 TILL POWER 3

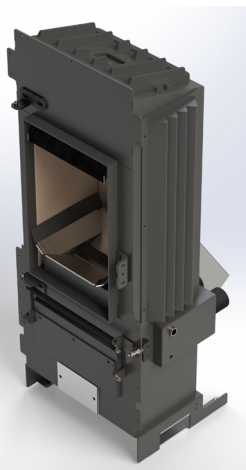
 **SOLO DIADEMA 6**
 DIADEMA 6 ONLY
CONVEZIONE NATURALE
 TUTTE LE POTENZE
 NATURAL CONVECTION
 ALL POWERS

 **TELECOMANDO RADIO**
 RADIO REMOTE CONTROL

 **50 Pa**
CAMERA STAGNA
 SEALED CHAMBER

 **CANDELETTA AL QUARZO**
 QUARZ CANDLE

NOVITA' / NEW: CAMERA DI COMBUSTIONE / COMBUSTION CHAMBRE



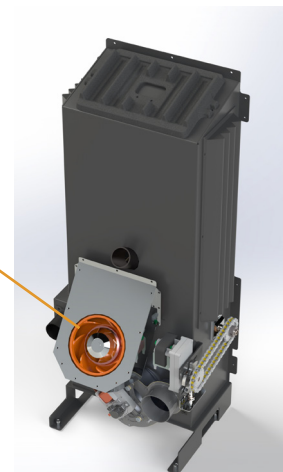
- MIGLIORI PRESTAZIONI
- MINORI INQUINANTI
- INGOMBRI MINORI
- MIGLIOR SISTEMA DI SCAMBIO TERMICO

- BETTER PERFORMANCE
- SPACE SAVING BODY
- LESS POLLUTION
- BETTER HEAT TRANSFER SYSTEM



- NUOVO VENTILATORE ARIA
- PIU' POTENTE
- PIU' SILENZIOSO

- NEW AIR FAN
- MORE POWERFULL
- MORE SILENT





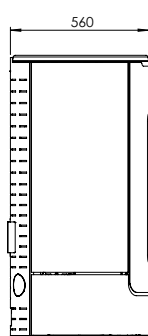
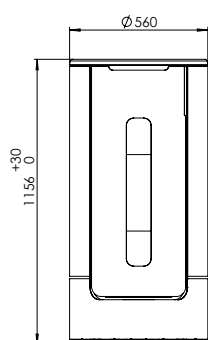
DIADEMA (PROVVISORI)

DIADEMA 6

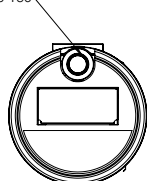
DIADEMA 8

DIADEMA 10

	<i>Fuel</i>	Pellet	Pellet	Pellet
Combustibile	<i>Fuel</i>	Pellet	Pellet	Pellet
Potenza Nominale / Ridotta	<i>Min. thermal output</i>	Nom. 6,0 / Min. 3,5 kW	Nom. 8,0 / Min. 3,6 kW	Nom. 10,0 / Min. 3,7 kW
Rendimento	<i>Efficiency</i>	max 92,0% / min 91,0%	max 92,0% / min 90,0%	max 92,0% / min 89,0%
Consumo orario pellet	<i>Hourly pellet consumption</i>	max - 1,5 Kg/h / min -0,8 Kg/h	max -1,9 Kg/h / min -0,8 Kg/h	max -2,2 Kg/h / min -0,8 Kg/h
Autonomia	<i>Autonomy</i>	max - 10 h / min - 18 h	max - 8 h / min - 19 h	max - 7 h / min - 20 h
Capacità serbatoio	<i>Tank capacity</i>	15 Kg	15 Kg	15 Kg
Assorbimento elettrico	<i>Power consumption</i>	max 320 W / 50 - 33 W	max 320 W / 60 - 33 W	max 320 W / 70 - 33 W
Ventilatore aria	<i>Heating fan</i>	500 m ³ /h	500 m ³ /h	500 m ³ /h
Regolazione e funzionamento	<i>Adjustment and functioning</i>	Radio comando / Radio remote control	Radio comando / Radio remote control	Radio comando / Radio remote control
Peso netto/Lordo	<i>Net weight/Gross</i>	140 Kg / 153 Kg	140 Kg / 153 Kg	140 Kg / 153 Kg

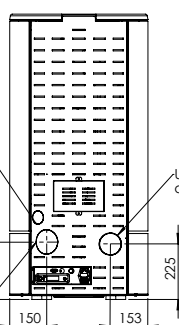


Uscita fumi anche
coassiale Ø80-130



Entrata aria Ø50 raccordabile
all'esterno se non coassiale

Uscita aria
canalizzata
optional Ø80



Uscita fumi posteriore
optional Ø80

OPTIONAL - DIADEMA 8 - 10

52641

OPTIONAL: kit canalizzazione singola aria calda da 130 m³/h

OPTIONAL: single hot air ducting kit from 130 m³/h

53152

OPTIONAL: sonda radio canalizzazione

OPTIONAL: ducting radio probe

52504

WIFI



OFELIA 7 - ○ 51026 | Bianca - White

● 51027 | Antracite - Anthracite

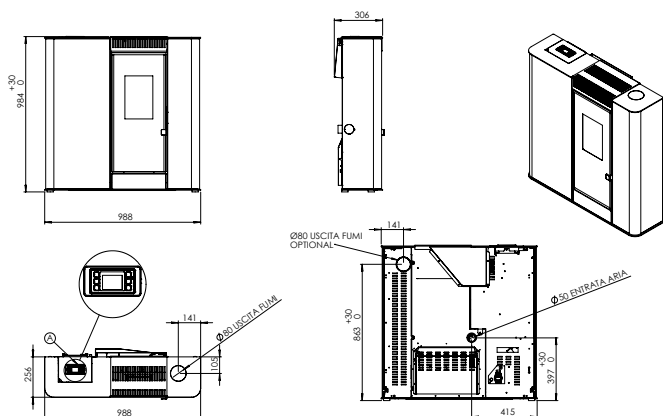
Stufa Pellet OFELIA 7. Uscita fumi superiore / posteriore 80 Ø OPTIONAL

Pellet Stove OFELIA 7. Upper flue outlet / rear flue outlet 80 Ø optional



OFELIA 7

Combustibile	Fuel	Pellet
Potenza Nominale / Ridotta	Min. thermal output	Nom. 7,6 / Min. 3,7 kW
Rendimento	Efficiency	max 90,7% / min 90,0%
Consumo orario pellet	Hourly pellet consumption	max -1,8 Kg/h / min -0,8 Kg/h
Autonomia	Autonomy	max -9 h / min -20 h
Capacità serbatoio	Tank capacity	17 Kg
Assorbimento elettrico	Power consumption	max 350 W / 95 - 75 W
Ventilatore aria	Heating fan	280 + 180 m³/h
Regolazione e funzionamento	Adjustment and functioning	DISPLAY - 6 BUTTONS
Peso netto/Lordo	Net weight/Gross	125 Kg / 138kg
Dati logistici LxPxH	logistic datas LxDxH	105*40*118



OPTIONAL

52504

WIFI

52613

OPTIONAL: kit uscita fumi posteriore
OPTIONAL: rear smoke output kit

52127

OPTIONAL: Raccordo aria canalizzata
OPTIONAL: Ducted air joint



SPICA 8 - ● 51440 | Grigio - Gray
● 51430 | Champagne

Stufa pellet SPICA 8 canalizzabile, **Uscita fumi superiore anche coassiale di serie / Posteriore con kit optional**, canalizzabile con optional
Pellet stove SPICA 8, upper smoke output as well as coaxial both standard / rear with optional kit, ductable with optional.

ITALY ONLY



USCITA FUMI COASSIALE
 COAXIAL FLUE OUTPUT

CAMERA STAGNA
 SEALED CHAMBER

VENTILAZIONE
 ON BOARD FAN

CONVEZIONE NATURALE
 FINO A POTENZA 3
 NATURAL CONVECTION
 TILL POWER 3

SPICA 8 [verticale]

Combustibile	<i>Fuel</i>	Pellet
Potenza Nominale / Ridotta	<i>Min. thermal output</i>	Nom. 8,0 / Min. 2,5 kW
Rendimento	<i>Efficiency</i>	max 90,5% / min 92,5%
Consumo orario pellet	<i>Hourly pellet consumption</i>	max -1,9 Kg/h / min -0,6 Kg/h
Autonomia	<i>Autonomy</i>	max -8 h / min -25 h
Capacità serbatoio	<i>Tank capacity</i>	15 Kg
Assorbimento elettrico	<i>Power consumption</i>	max 330 W / 57 - 21 W
Ventilatore aria	<i>Heating fan</i>	250 m ³ /h
Regolazione e funzionamento	<i>Adjustment and functioning</i>	WIFI - APP
Peso netto/Lordo	<i>Net weight/Gross</i>	130 Kg / 143 Kg
Dati logistici LxPxH	<i>logistic datas LxDxH</i>	72*74*133

OPTIONAL

50771

Telecomando radio/ *Radio remote control*

52316

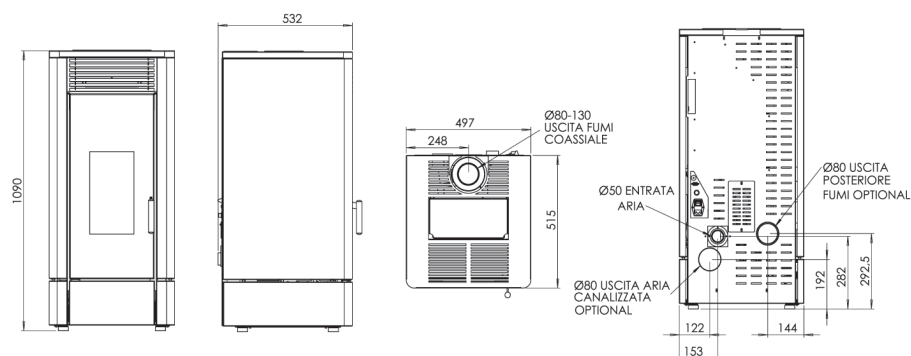
OPTIONAL: kit canalizzazione singola aria calda da 130 m³/h

OPTIONAL: single hot air ducting kit from 130 m³/h

51438

OPTIONAL: kit uscita fumi posteriore

OPTIONAL: rear smoke output kit





FENICE 8 - ● 51397 | Antracite - Anthracite
● 51435 | Champagne

Stufa Pellet FENICE 8, **porta esterna vetro, fianchi in lamiera**, uscita fumi solo posteriore, canalizzabile con optional Pellet stove FENICE 8, **external glass door, metal glass sides, rear smoke output, ductable with optional**

FENICE 8 UP - ● 51499 | Antracite - Anthracite
● 51500 | Champagne

Stufa Pellet FENICE UP 8 canalizzabile, **Uscita fumi superiore anche coassiale di serie / Posteriore con kit optional** Pellet Stove FENICE UP 8, **upper smoke output as well as coaxial both standard / rear with optional kit, ductable with optional.**

ITALY ONLY

A+ **DM186** **CONTO**
4 STELLE **TERMICO**



VENTILAZIONE
ON BOARD FAN



CAMERA STAGNA
SEALED CHAMBER



CONVEZIONE NATURALE
FINO A POTENZA 3
NATURAL CONVECTION
TILL POWER 3



USCITA FUMI COASSIALE
SOLO FENICE UP
COAXIAL FLUE OUTPUT
FENICE UP ONLY

FENICE 8 - FENICE 8 UP

Combustibile	Fuel	Pellet
Potenza Nominale / Ridotta	Min. thermal output	Nom. 8,0 / Min. 2,5 kW
Rendimento	Efficiency	max 90,5% / min 92,5%
Consumo orario pellet	Hourly pellet consumption	max -1,9 Kg/h / min -0,6 Kg/h
Autonomia	Autonomy	max -9,0 h / min -28 h
Capacità serbatoio	Tank capacity	17 Kg - 15 Kg UP
Assorbimento elettrico	Power consumption	max 330 W / 57 - 21 W
Ventilatore aria	Heating fan	250 m³/h
Regolazione e funzionamento	Adjustment and functioning	WIFI - APP
Peso netto/Lordo	Net weight/Gross	156 Kg / 169 kg
Dati logistici LxPxH	logistic datas LxDxH	72*74*133

OPTIONAL

50771

Telecomando radio/ Radio remote control

FENICE 8

52316

OPTIONAL: kit canalizzazione aria singola 130 m3/h

OPTIONAL: single air ducting kit 130 m3/h

FENICE 8 UP

52316

OPTIONAL: kit canalizzazione aria singola 130 m3/h

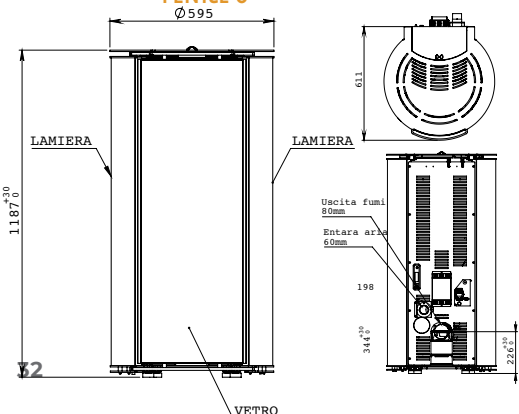
OPTIONAL: single air ducting kit 130 m3/h

51438

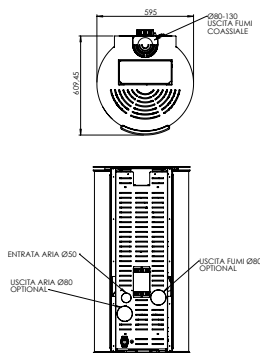
OPTIONAL: kit uscita fumi posteriore

OPTIONAL: rear smoke output kit

FENICE 8



FENICE 8 UP





ELISA 8 - ○ 51450 | Bianca - White
● 51452 | Antracite - Anthracite

Stufa Pellet ELISA bianca, uscita fumi solo posteriore, canalizzabile con optional.
Pellet Stove ELISA white, rear smoke output. ductable optional.

ITALY ONLY



DM186 CONTO
4 STELLE TERMICO



CAMERA STAGNA SEALED CHAMBER
VENTILAZIONE ON BOARD FAN



CONVEZIONE NATURALE FINO A POTENZA 3
NATURAL CONVECTION TILL POWER 3

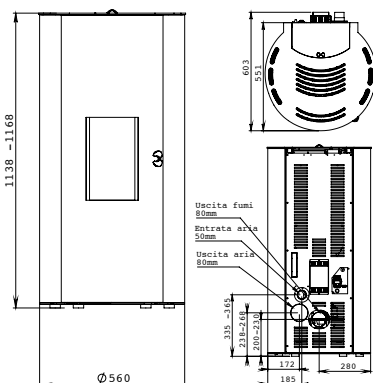


USCITA FUMI COASSIALE SOLO ELISA UP
COAXIAL FLUE OUTPUT ELISA UP ONLY

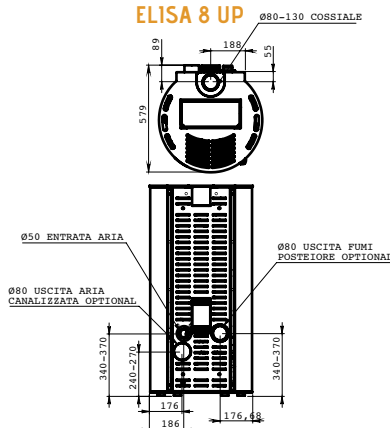
ELISA 8 - ELISA 8 UP

Combustibile	Fuel	Pellet
Potenza Nominale / Ridotta	Min. thermal output	Nom. 8,0 / Min. 2,5 kW
Rendimento	Efficiency	max 90,5% / min 92,5%
Consumo orario pellet	Hourly pellet consumption	max -1,9 Kg/h / min -0,6 Kg/h
Autonomia	Autonomy	max -9,0 h / min -28 h
Capacità serbatoio	Tank capacity	17 Kg - 15 Kg UP
Assorbimento elettrico	Power consumption	max 330 W / 57 - 21 W
Ventilatore aria	Heating fan	250 m³/h
Regolazione e funzionamento	Adjustment and functioning	WIFI - APP
Peso netto/Lordo	Net weight/Gross	156 Kg / 169 kg
Dati logistici LxDxH	logistic datas LxDxH	72*74*133

ELISA 8



ELISA 8 UP



ELISA 8 UP - ○ 51033 | Bianca - White
● 51034 | Antracite - Anthracite

Stufa Pellet ELISA UP 8 canalizzabile, Uscita fumi superiore anche coassiale di serie / Posteriore con kit optional
Pellet Stove ELISA UP 8, upper smoke output as well as coaxial both standard / rear with optional kit, ductable with optional.optional optional.

OPTIONAL

50771

Telecomando radio/ Radio remote control

ELISA 8

52316

OPTIONAL: kit canalizzazione aria 130 m3/h
OPTIONAL: air ducting kit from 130 m3 /h

ELISA 8 UP

52316

OPTIONAL: kit canalizzazione aria 130 m3/h
OPTIONAL: air ducting kit from 130 m3 /h

51438

OPTIONAL: kit uscita fumi posteriore
OPTIONAL: rear smoke output kit



KUMA 10S - Stufa pellet KUMA 10S, uscita fumi posteriore.
Pellet stove KUMA 10S, rear smoke output.

KUMA 12SC - Stufa pellet KUMA 12SC, uscita fumi posteriore.
Canalizzata
Pellet stove KUMA 12SC, rear smoke output.
Ducted.

- 51540 | Bianca - White
- 51543 | Blu petrolio - Petrol
- 51541 | Grigio - Gray
- 51542 | Glicine - Wisteria

- 51544 | Bianco - White
- 51547 | Blu petrolio - Petrol blue
- 51545 | Grigio - Gray
- 51546 | Glicine - Wisteria



CAMERA STAGNA
SEALED CHAMBER

SOLO KUMA 12
KUMA 12 ONLY



CANALIZZAZIONE
DUCTED



VENTILAZIONE
ON BOARD FAN

SOLO KUMA 10
KUMA 10 ONLY

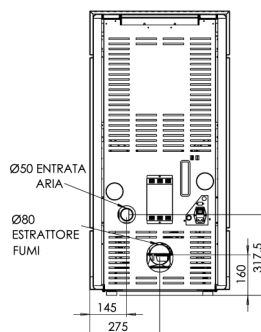
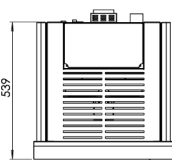
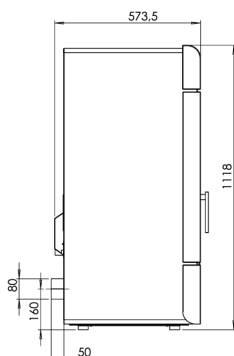
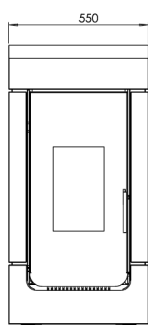


CONVEZIONE NATURALE
FINO A POTENZA 3
NATURAL CONVECTION
TILL POWER 3

KUMA 10S

KUMA 12SC

	Fuel	Pellet	Pellet
Combustibile	Fuel	Pellet	Pellet
Potenza Nominale / Ridotta	Min. thermal output	Nom. 10 / Min. 4,5 kW	Nom. 12 / Min. 4,5 kW
Rendimento	Efficiency	max 88,7% / min 93,6%	max 87,0% / min 93,6%
Consumo orario pellet	Hourly pellet consumption	max -2,5 Kg/h / min -1,03 Kg/h	max -2,5 Kg/h / min -1,03 Kg/h
Autonomia	Autonomy	max -9 h / min -22 h	max -7 h / min -17 h
Capacità serbatoio	Tank capacity	22 Kg	22 Kg
Assorbimento elettrico	Power consumption	max 350 W / 64 - 39 W	max 350 W / 157 - 39 W
Ventilatore aria	Heating fan	250 m ³ /h	250 + 180 +180 m ³ /h
Regolazione e funzionamento	Adjustment and functioning	Radio comando / Radio remote control	Radio comando / Radio remote control
Peso netto/Lordo	Net weight/Gross	130 Kg	137 Kg



OPTIONAL

50771

Telecomando radio/ Radio remote control



CAMINI FIREPLACES NIA LUG L



LEONE 60- 32355 Camino a legna Leone.
Wood fireplace Leone

ITALY ONLY



4
STELLE



CONTO
TERMICO



USCITA VERTICALE
FUMI
UPPER SMOKE
EXHAUST



CONVEZIONE
NATURALE
NATURAL
CONVECTION

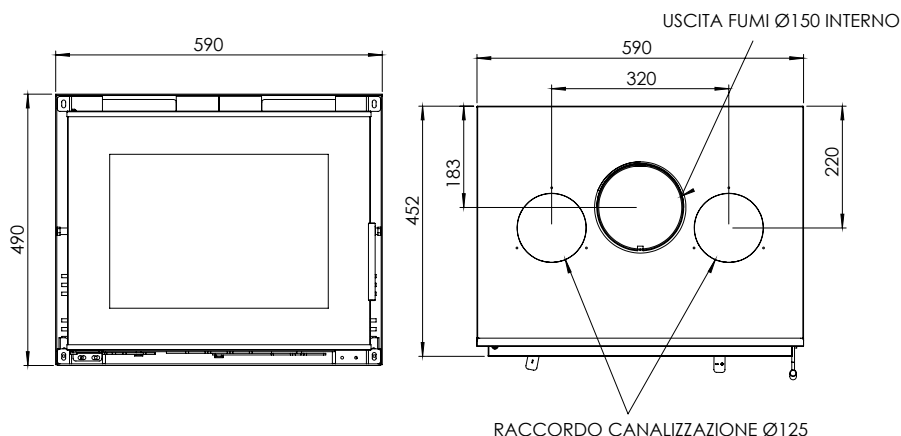


CAMERA COMBUSTIONE
IN VERMICULITE
SCAMOLEX
COMBUSTION CHAMBER



PORTA REVERSIBILE
REVERSIBLE DOOR

LEONE		60 - 32355
Combustibile	Fuel	WOOD/LEGNA
Potenza Nominale / Ridotta	Min. thermal output	Nom. 8,8 kW
Rendimento	Efficiency	max 85.1%
Consumo orario pellet	Hourly pellet consumption	max -2,40 kg/h
Peso netto	Net weight/Gross	70 Kg



OPTIONAL

32498

RACCORDO ARIA ESTERNA POSTERIORE/
DAL BASSO
INLET AIR FLOW BELOW/BACK

32462

KIT VENTILAZIONE
FAN KIT

32438

CANALIZZAZIONE DELL' ARIA
DUCTING KIT

50540

Tavolino regolabile per inserti
Adjustable table for inserts

Cornici di finitura / Finishing frames :
(Dettagli nella pagina accessori / details at
accessories page)

32569

32562

32563

32568



LEONE 70- 32356 Camino a legna Leone.
Wood fireplace Leone



LEONE		70 - 32356
Combustibile	Fuel	WOOD/LEGNA
Potenza Nominale / Ridotta	Min. thermal output	Nom. 9,5 kW
Rendimento	Efficiency	max 85,1%
Consumo orario pellet	Hourly pellet consumption	max -2,63 Kg/h
Peso netto	Net weight/Gross	80 Kg

OPTIONAL

32498
RACCORDO ARIA ESTERNA POSTERIORE/
DAL BASSO
INLET AIR FLOW BELOW/BACK

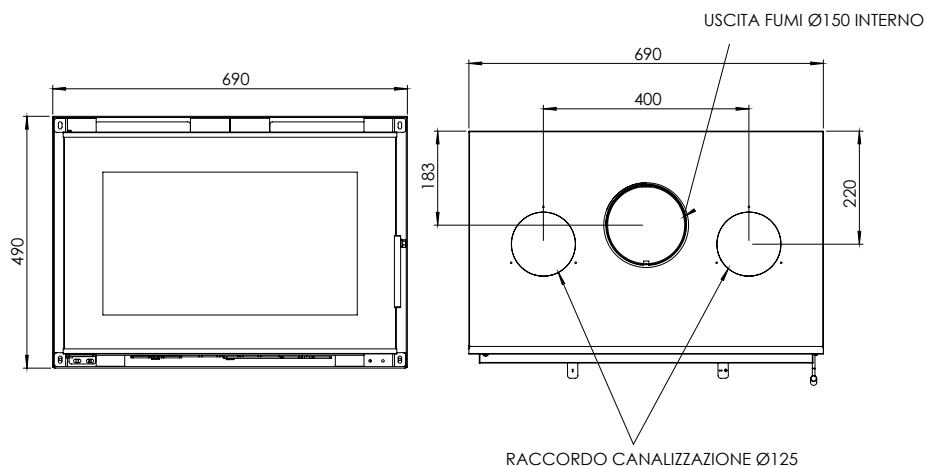
32462
KIT VENTILAZIONE
FAN KIT

32439
CANALIZZAZIONE DELL' ARIA
DUCTING KIT

50540
Tavolino regolabile per inserti
Adjustable table for inserts

Cornici di finitura / Finishing frames :
(Dettagli nella pagina accessori / details at
accessories page)

32569
32564
32565
32568

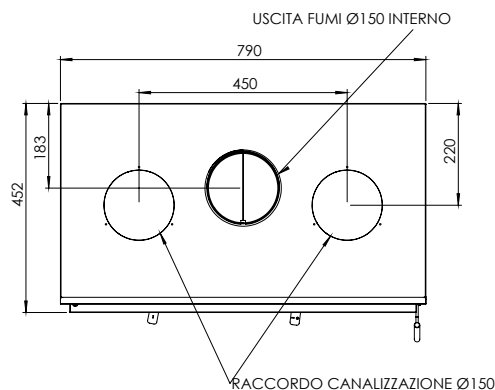
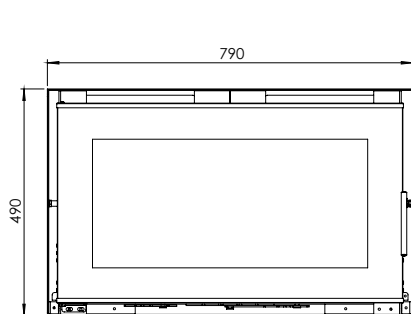




LEONE 80- 32357 Camino a legna Leone.
Wood fireplace Leone



LEONE		80 - 32357
Combustibile	Fuel	WOOD/LEGNA
Potenza Nominale / Ridotta	Min. thermal output	Nom. 10,3 kW
Rendimento	Efficiency	max 86,21%
Consumo orario pellet	Hourly pellet consumption	max -2,80 kg/h
Peso netto	Net weight/Gross	90 Kg



OPTIONAL

32498

RACCORDO ARIA ESTERNA POSTERIORE/
DAL BASSO
INLET AIR FLOW BELOW/BACK

32462

KIT VENTILAZIONE
FAN KIT

32440

CANALIZZAZIONE DELL' ARIA
DUCTING KIT

50540

Tavolino regolabile per inserti
Adjustable table for inserts

Cornici di finitura / Finishing frames :
(Dettagli nella pagina accessori / details at
accessories page)

32569

32566

32567

32568

Pagina	Modello Pellet Pellet type	Potenza nominale K w Power Kw	Rendim. nominale % Efficiency nominal %	Serbatoio Kg Tank pellet Kg	Dimensioni articolo Item dimensions L x P x H cm	Peso Netto Kg Net Weight Kg	Dimensioni Imballo Package dimensions L x P x H cm	Peso Lordo Kg Gross Weight Kg	Energy Label	DM186 Certific. Ambientale	GSE Coeff.
	MINI STARFIRE 9	9,1	93,3	35	52,3 x 60 x 149	153	78 x 77 x 163	180	A+	★★★★★	1,2
	STARFIRE M17	10,9	90,3	45	51,8 x 64,4 x 153	160	78 x 77 x 163	187	A+	★★★★★	1,5
	STARFIRE M18	14,4	90,3	45	51,8 x 64,4 x 153	160	78 x 77 x 163	187	A+	★★★★★	1,5
	APOLLO M16	15,3	90,8	60	101 x 58,5 x 129	185	120 x 80 x 156	225	A+	★★★★★	1,5
	ORION 13	13,0	90,4	60	91,6 x 58,5 x 129	173	120 x 80 x 156	213	A+	★★★★★	1,5
	SIRIUS 11	10,7	90,3	60	91,6 x 58,5 x 129	137	120 x 80 x 156	177	A+	★★★★★	1,5
	CORNER M16 destro/sinistro	15,3	90,8	60	80,4 x 61 x 138	180	120 x 80 x 156	220	A+	★★★★★	1,5
	FRATAC V M16 3 vetri	15,3	90,8	60	81,4 x 61 x 138	193	120 x 80 x 156	233	A+	★★★★★	1,5
	PERSEO 6	6,2	91,2	12	68,7 x 58,1 x 47,5	93	85 x 68 x 72	108	A+	★★★★★	1,5
	DRACO 8	7,8	91,2	15	61,1 x 56,7 x 57	108	83 x 63 x 72	121	A+	★★★★★	1,2
	GERICO 9	9,8	92,7	15	79,6 x 58,1 x 57,6	133	85 x 73 x 75	130	A+	★★★★★	1,2
	MARLIN 500 MH27 ac	27,0	90,5	90	90 x 70 x 150	212	120 x 80 x 163	254	A+	★★★★★	1,2
	MARLIN 1000 MH27 acs	27,0	90,5	90	110 x 70 x 150	240	135 x 80 x 163	282	A+	★★★★★	1,2
	MARLIN 1000 MH27 ac dx/sx	27,0	90,5	90	110 x 70 x 150	233	135 x 80 x 163	275	A+	★★★★★	1,2
	GEMMA	10,1	91,5	15	100,2 x 101,7 x 30,2	140	105 x 40 x 118	153	A+	★★★★★	1,5
	DIADEMA 6	6	91	15	56x56x115	138	73 x 74 x 133	150	A+	★★★★★	1,5
	DIADEMA 8	8	90	15	56x56x115	138	73 x 74 x 133	150	A+	★★★★★	1,5
	DIADEMA 10	10	89	15	56x56x115	138	73 x 74 x 133	150	A+	★★★★★	1,5
	MIZARD 9	10,1	91,5	15	100,2 x 101,7 x 30,2	140	105 x 40 x 118	153	A+	★★★★★	1,5
	VEGA 9	10,1	91,5	15	100 x 101,9 x 30,2	140	105 x 40 x 118	153	A+	★★★★★	1,5
	OFELIA 7	7,6	90,7	17	99 x 31,8 x 99,2	125	105 x 40 x 118	138	A+	★★★★★	1,5
	ELISA	8	90,5	17	56 x 60,3 x 114	128	73 x 74 x 133	141	A+	★★★★★	1,5
	ELISA UP 8	8	90,5	15	56 x 57,9 x 114	128	73 x 74 x 133	141	A+	★★★★★	1,5
	FENICE 8	8	90,5	17	59,3 x 66,5 x 119	156	73 x 74 x 133	169	A+	★★★★★	1,5
	SPICA 8	8	90,5	15	49,7 x 53,2 x 109	130	73 x 74 x 133	143	A+	★★★★★	1,5
	KUMA 10S	10	88,7	22	55 x 57,5 x 112	130	73 x 74 x 133	150	A+	★★★★★	1,5
	KUMA 12SC	12	87,0	22	55 x 57,5 x 112	137	73 x 74 x 133	159	A+	★★★★★	1,5
	LEONE 60	8,8	85,1	x	45x49x59	70	62,5x53,5x62	75	A+	★★★★★	1,5
	LEONE 70	9,5	85,1	x	45x49x69	80	72,5x53,5x62	80	A+	★★★★★	1,5
	LEONE 80	10,3	86,2	x	45x49x79	90	82,5x53,5x62	85	A+	★★★★★	1,5



Pellet Accessorie



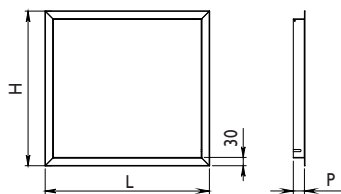
Cornici EVA di finitura STANDARD

STANDARD: cornice in ferro, colore nero, **larghezza 3 cm, profondità 3 cm**

La cornice va inserita all'interno del profilo della porta (eccetto per modelli Starfire, Mini Starfire, Gerico/Perseo dove viene montata all'esterno del controtelaio).

STANDARD: Finishing Flat metal frame, color black, width 3 cm, depth 3 cm

The frame must be inserted into the door profile (except for Starfire and Mini Starfire models where it is mounted outside the counterboard).



32352 |

MINI STARFIRE: L 465 x H 1180 x P 30 misura esterna / outside size

32353 |

STARFIRE M17/ STARFIRE M18: L 580 x H 890 x P 30 misura esterna / outside size

29783 |

APOLLO M16: L 998 x H 502 x P 30 misura esterna / outside size

29782 |

ORION 13: L 860 x H 562 x P 30 misura esterna / outside size

29784 |

SIRIUS 11: L 558 x H 562 x P 30 misura esterna / outside size



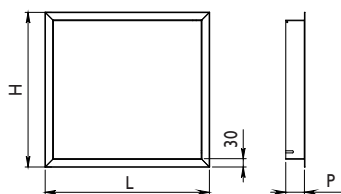
Cornici EVA di finitura SPECIAL

SPECIAL: cornice in ferro, colore nero, **larghezza 3 cm, profondità 7 cm**

La cornice va inserita all'interno del profilo della porta (eccetto per modelli Starfire, Mini Starfire, Gerico/Perseo dove viene montata all'esterno del controtelaio).

SPECIAL: finishing Flat metal frame, color black, width 3 cm, depth 7 cm

The frame must be inserted into the door profile (except for Starfire, Mini Starfire, Gerico, Perseo models where it is mounted outside the counterboard).



29793 |

APOLLO M16: L 1058 x H 562 x P 70 misura esterna / outside size

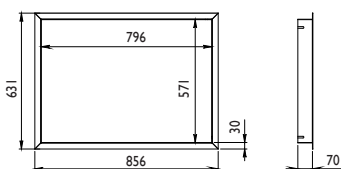
29792 |

ORION 13: L 860 x H 562 x P 70 misura esterna / outside size

Cornici EVA di finitura per GERICO 9

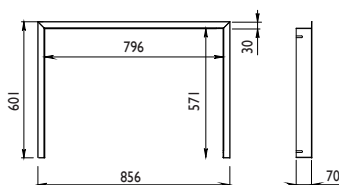
32524 |

Cornice 4 lati per GERICO
Frame 4 sides for GERICO



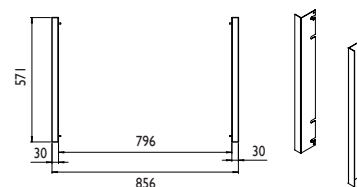
32523 |

Cornice 3 lati per GERICO per installazione
con basamento
*Frame 3 sides for GERICO
for installation with stand/bench*



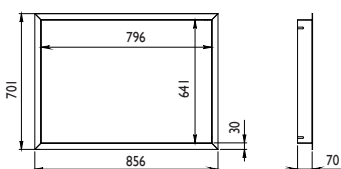
32532 |

Cornice 2 lati laterali per GERICO
Frame 2 lateral sides for GERICO



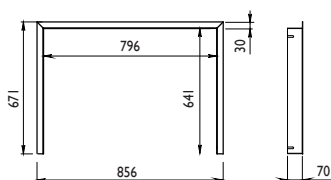
32544 |

Cornice Special 4 lati per GERICO con
cassetto carico pellet superiore
*Frame 4 sides for GERICO with upper
pellet load drawer*



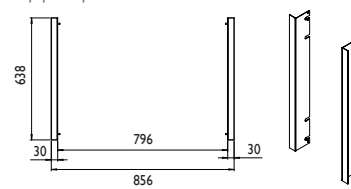
32543 |

Cornice Special 3 lati per GERICO con
cassetto carico pellet superiore
*Frame 3 sides for GERICO with upper
pellet load drawer*



32542 |

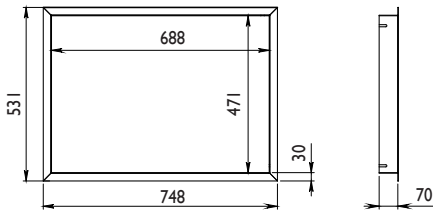
Cornice 2 lati laterali per GERICO con
cassetto carico pellet superiore
*Frame 2 lateral sides for GERICO with
upper pellet load drawer*



Cornici EVA di finitura per PERSEO 6

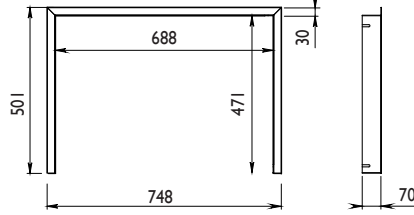
32537 |

Cornice Special 4 lati per PERSEO
Mod. Special 4 sides for PERSEO



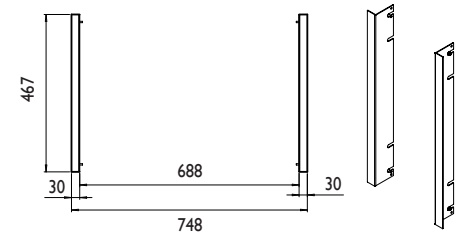
32539 |

Cornice Special 3 lati per PERSEO
per installazione con basamento
Mod. Special 3 sides for PERSEO
for installation with stand/bench



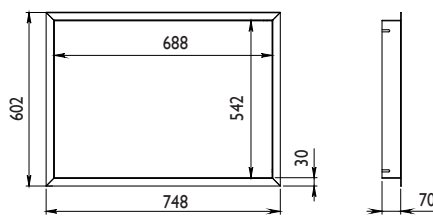
32538 |

Cornice Special 2 lati laterali per PERSEO
Mod. Special 2 lateral sides for PERSEO



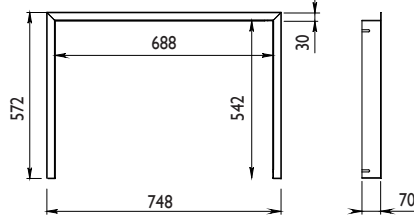
32547 |

Cornice Special 4 lati per PERSEO con
cassetto carico pellet superiore
Mod. Special 4 sides for PERSEO with
upper pellet load drawer



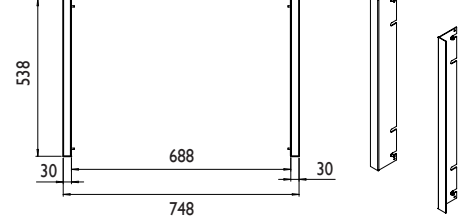
32546 |

Cornice Special 3 lati per PERSEO con
cassetto carico pellet superiore
Mod. Special 3 sides for PERSEO with
upper pellet load drawer



32545 |

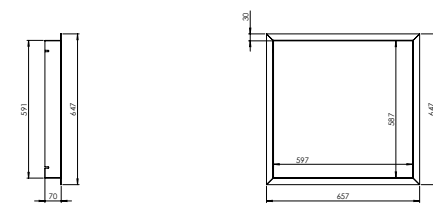
Cornice Special 2 lati laterali per PERSEO
con cassetto carico pellet superiore
Mod. Special 2 lateral sides for PERSEO
with upper pellet load drawer



Cornici EVA di finitura per DRACO

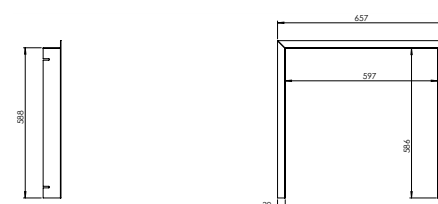
32548 |

Cornice 4 lati per DRACO
Mod. Special 4 sides for DRACO



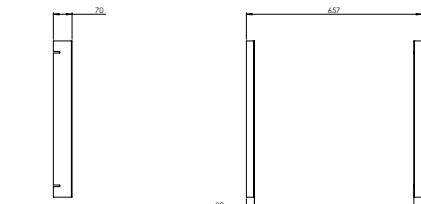
32549 |

Cornice 3 lati per DRACO
per installazione con basamento
Mod. Special 3 sides for DRACO
for installation with stand/bench



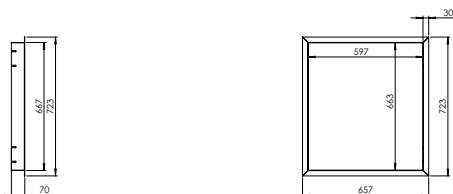
32550 |

Cornice 2 lati laterali per DRACO
Mod. Special 2 lateral sides for DRACO



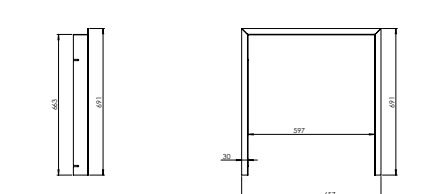
32551 |

Cornice 4 lati per DRACO con cassetto
carico pellet superiore
Mod. Special 4 sides for DRACO with upper
pellet load drawer



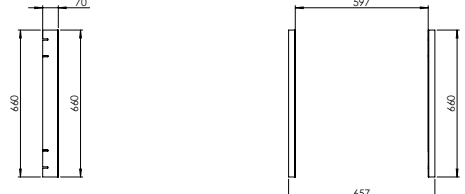
32552 |

Cornice 3 lati per DRACO con cassetto
carico pellet superiore
Mod. Special 3 sides for DRACO with upper
pellet load drawer



32553 |

Cornice 2 lati laterali per DRACO con
cassetto carico pellet superiore
Mod. Special 2 lateral sides for DRACO
with upper pellet load drawer



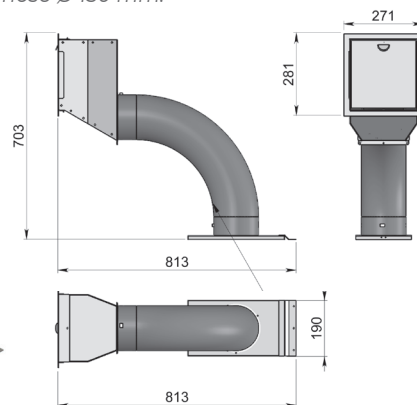
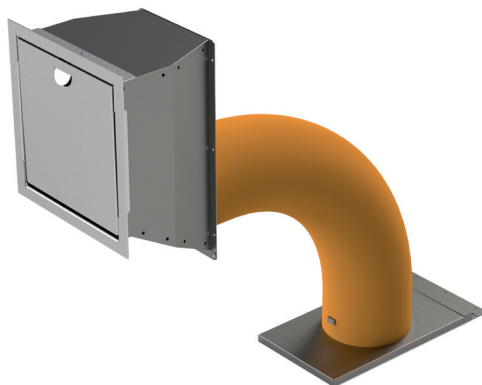
CARICATORE DELUXE

52543 |

Compatibile con i seguenti modelli:
Compatible with the following models:
 MINI STARFIRE 9
 STARFIRE M17 -M18
 APOLLO M16
 ORION 13
 SIRIUS 11
 CORNER M16
 FRATAC V M16
 MARLIN 1000
 MARLIN 500

Caricatore pellet Deluxe, per caricamento pellet frontale, posteriore, superiore o laterale completo di 1 metro di tubo silconico Ø 150 mm.

Deluxe pellet charger, for loading pellet in front, back, top or side respect to the appliance complete with 1 meters silconic hose Ø 150 mm.



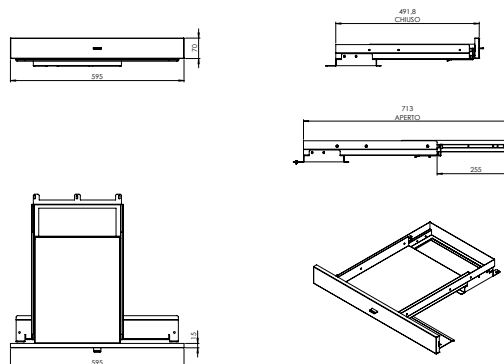
CASSETTO CARICATORE PELLETT PER INSERTI

Cassetto estraibile per caricamento pellet superiore all'apparecchio.
Removable drawer for loading pellets above the appliance.



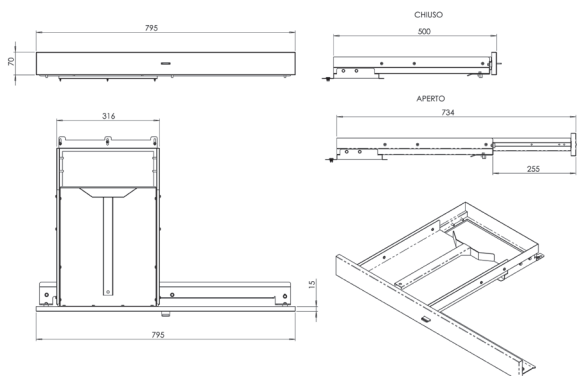
52607 |

Cassetto compatibile con il modello 51536 DRACO 8
Compatible with the models 51536 draco 8



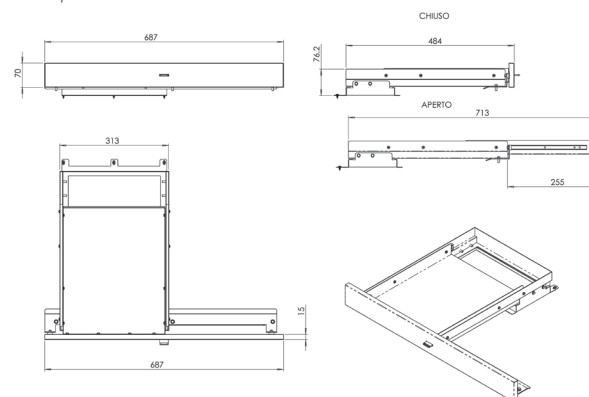
52809 |

Cassetto compatibile con il modello 51048 GERICO 9
Compatible with the model 51048 gerico 9



52810 |

Cassetto compatibile con il modello 51030 PERSEO 6
Compatible with the model 51030 PERSEO 6



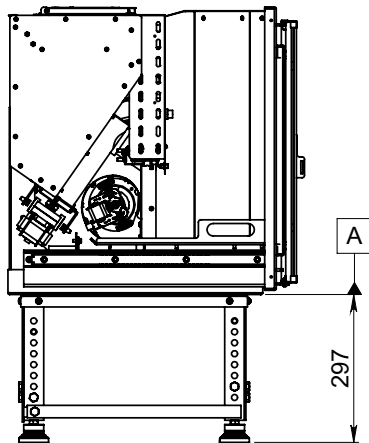
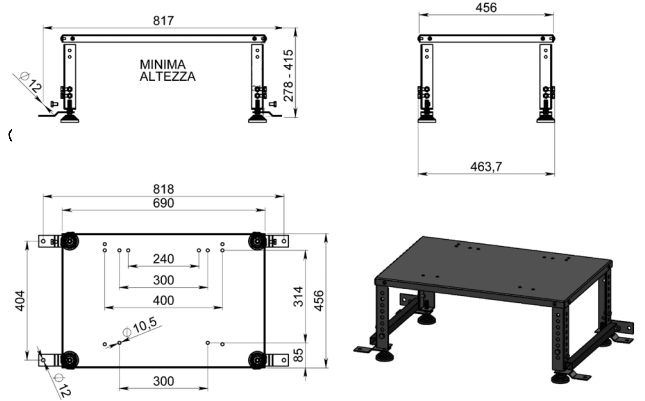
53236 |

Kit raccordo entrata aria esterna Ø 80 mm
per GERICO 9, PERSEO 6, DRACO 8
*External air inlet fitting kit Ø 80 mm
for GERICO 9, PERSEO 6, DRACO 8*

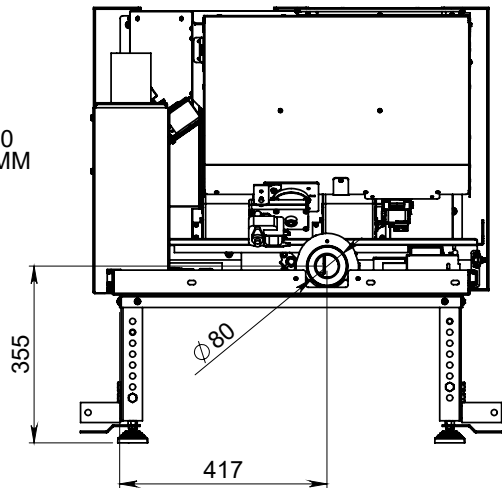


50540 |

Tavolino regolabile per inserti GERICO 9, PERSEO 6, DRACO 8,
LEONE 60, 70, 80.
*Adjustable table for inserts GERICO 9, PERSEO 6, DRACO 8,
LEONE 60, 70, 80.*



RIFERIMENTO A :
ALTEZZA MINIMA 297
ALTEZZA MASSIMA 430
INTERVALLO FORI 22MM



KIT RACCORDO ENTRATA
ARIA Ø80 CODICE 53236

KIT TAVOLINO OPTIONAL
CODICE 50540

STRUTTURA SUPPORTO KIT GERICO

52600 |

Struttura supporto kit GERICO
(da abbinare a caricatore 52601
e 52602).

*Gerico kit support structure
(to be combined with charger
52602).*



STRUTTURA SUPPORTO KIT PERSEO

52605 |

Struttura supporto kit Perseo
(da abbinare a caricatore
52602).

*Perseo kit support structure
(to be combined with charger
52602).*



STRUTTURA SUPPORTO KIT DRACO

52606 |

Struttura supporto kit Draco
(da abbinare a caricatore
52602).

*Draco kit support structure
(to be combined with
charger 52602).*



KIT CANALIZZAZIONE ARIA GERICO

52600 + 52601

Kit canalizzazione aria per gerico completo di tubo siliconico da
1mt , bocchetta aria ø80 bianca codice 32480.

*Air ducting kit complete with 80 cm siliconic hose and round
nozzle code 32480, for Gerico 9.*

Bocchetta 32480 inclusa
Air vent 32480 included

Tubo 80 cm incluso
80 cm tube included



KIT CARICATORE PELLET

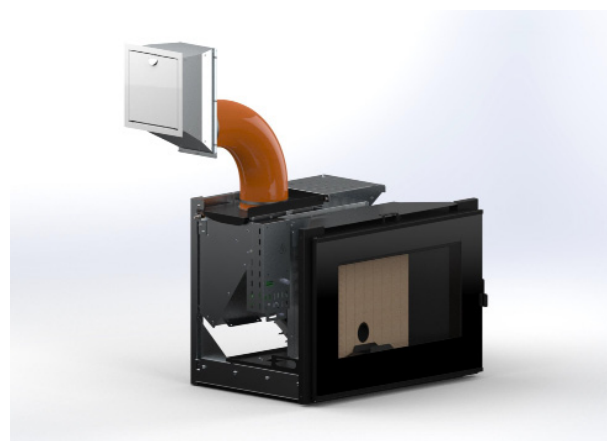
52600 + 52602 (GERICO)

52605 + 52602 (PERSEO)

52606 + 52602 (DRACO)

Kit caricatore pellet per caricamento frontale , posteriore , laterale
completo di tubo siliconico da 1mt ø152 e sportello bianco con
cornice (compatibile con Gerico, Perseo e Draco).

*Pellet charger kit, for loading pellet in front, back or side complete
with 1 meters siliconic hose Ø 152 mm and white door with frame
(compatible with Gerico, Perseo and Draco).*



KIT COMPLETO (STRUTTURA + CARICATORE + CANALIZZAZIONE + SPORTELLO) GERICO

52604 |

Kit completo carico pellet e canalizzazione GERICO con sportello
grande bianco integrato di struttura uscita aria , questo permette
di avere nello stesso sportello sia il carico che la canalizzazione.

*Complete pellet loading and ducting kit for GERICO with large
white door integrated with the air outlet structure, this allows you
to have both the load and the ducting in the same door.*



KIT VENTILATORI PLUS

51406 | FINO ALLA MATRICOLA A100025246
51491 | DALLA MATRICOLA A100025247

NEW Kit ventilatori plus, composto da 2 ventilatori centrifughi da 160 m³/h cadauno per una canalizzazione aria Ø 80 mm fino a max 6 metri di distanza. Specificare all'ordine se il kit deve essere montato sul camino.

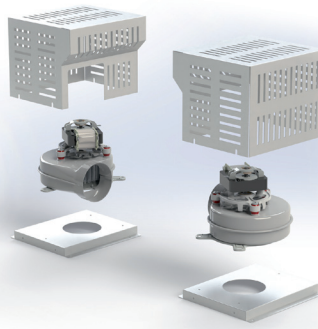
Kit ventilation plus It consists of 2 centrifugal fans 160 m³/h each for an air channeling Ø 80 mm up to max 6 meters away. Specify when ordering if the kit must be mounted on the chimney

Compatibile con i seguenti modelli:

Compatible with the following models:

51400 APOLLO M16

51402 ORION 13

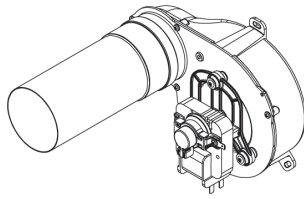


KIT CANALIZZAZIONE STUFE

52316 |

OPTIONAL: kit canalizzazione aria calda da 130 m³/h per stufe FENICE 8, ELISA, ELISA UP 8, LEO 6, SPICA 8

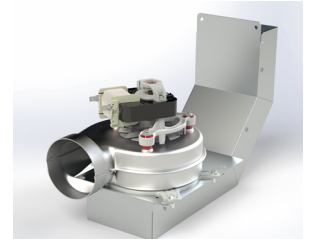
OPTIONAL: hot air ducting kit from 130 m³/h for stoves FENICE 8, ELISA, ELISA UP 8, LEO 6, SPICA 8



52612 |

OPTIONAL: kit canalizzazione aria calda da 130 m³/h per stufe GEMMA VEGA E MIZAR

OPTIONAL: hot air ducting kit from 130 m³/h for stoves GEMMA VEGA E MIZAR

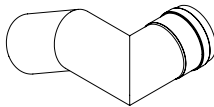


KIT OPTINAL PER STUFE

51438 |

OPTIONAL: kit uscita fumi posteriore, per stufe: LEO6 - ELISA UP8 - SPICA8

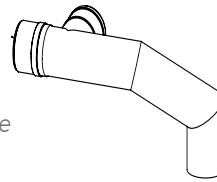
OPTIONAL: rear smoke output kit for: LEO6 - MIZARD9 - VEGA9 - ELISA UP8 - SPICA8



53240 |

OPTIONAL: kit uscita fumi posteriore per stufe: VEGA GEMMA e MIZARD

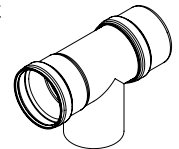
OPTIONAL: rear smoke output kit for: GEMMA VEGA and MIZARD



52613 |

OPTIONAL: kit uscita fumi posteriore per stufe: OFELIA

OPTIONAL: rear smoke output kit for OFELIA stoves



KIT REFRATTARI NERI

35432 |

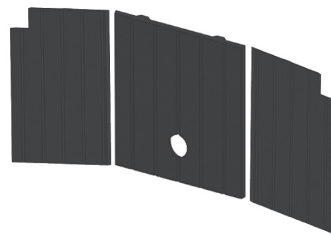
OPTIONAL: kit refrattari interni, colore nero per mod. APOLLO M16

OPTIONAL: internal refractory kit, black color for model APOLLO M16

35431 |

OPTIONAL: kit refrattari interni, colore nero per mod. ORION 13

OPTIONAL: internal refractory kit, black color for model ORION 13



32142 PORTA ISPEZ. CARTONGESSO

32142 |

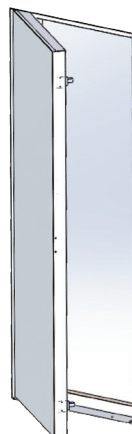
Sportello ispezione L 52,3 X H 144 cm, telaio in metallo per cartongesso, reversibile: apertura a destra o a sinistra.

Inspection door in iron for plasterboard, Reversible: opening to the right or to the left. External measure L 52,3 x H 144 cm

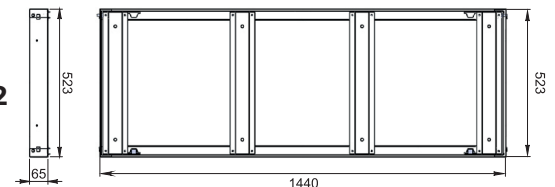
32472 |

Sportello ispezione L 52,3 x H 70 cm, telaio in metallo per cartongesso, reversibile: apertura a destra o a sinistra.

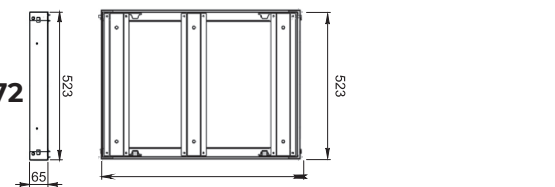
Inspection door in iron for plasterboard, Reversible: opening to the right or to the left.



32142



32472



700

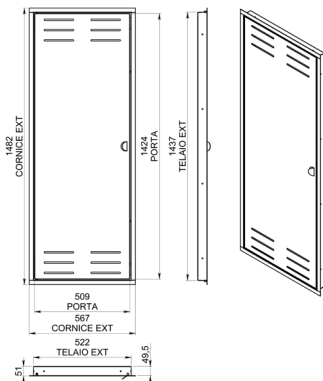
32093 PORTA ISPEZ. LAMIERA

32093 |

Nuovo sportello ispezione L 56,7 x H 148,2 cm, in lamiera verniciata bianca, reversibile: apertura a destra o a sinistra.

New inspection door in painted sheet metal white, Reversible: opening to the right or to the left.

External measure L 56,7 x H 148,2 cm.

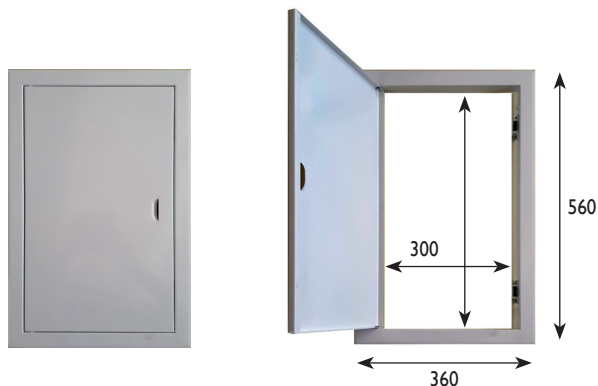


32495 SPORTELLO ISPEZIONE LAMIERA

32495 |

Sportello ispezione L 30 x H 50 cm, in lamiera verniciata bianca, consigliato per manutenzione ventilatori o carico pellet.

Inspection door 30 x 50 cm in painted sheet metal white, recommended for fan maintenance or pellet loading.



MODULO WIFI

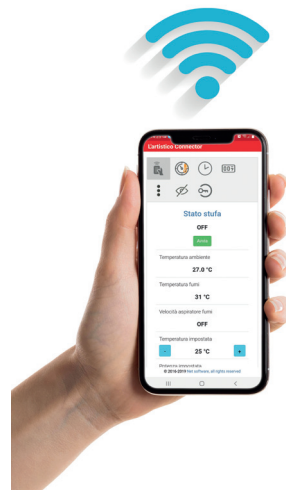
52504 |

Modulo WIFI per il controllo dell'apparecchio via wifi e da remoto via smartphone o tablet con APP dedicata "L'Artistico Connector"

WiFi module for control of the device via wifi and remotely via smartphone or tablet with APP dedicated "L'Artistico Connector"

Requisiti minimi del sistema operativo dello smartphone: Android 5.0 - IOS 11.0 o successivi. Compatibile esclusivamente con tutti i prodotti a pellet della nostra gamma L'Artistico

Minimum smartphone operating system requirements: Android 5.0 - IOS 11.0 or later. Compatible only with all the pellet products in our L'Artistico range



53152 SONDA TEMPERATURA RADIO CANALIZZAZIONE

53152

Sonda temperatura radio per canalizzazione.

Controlla il ventilatore della canalizzazione in base alla temperatura.

Solo per modelli stufe autopulenti.

Radio probe for ducting system.

It controls the ducting fan based on the room temperature.





CUTTING
ACCESSORIES

KIT VENTILAZIONE LEONE 60-70-80 / DUCTING KIT LEONE 60-70-80

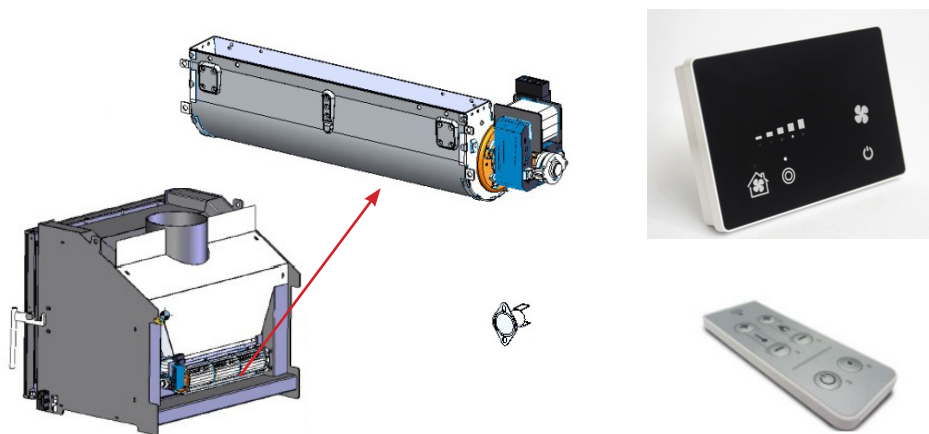
32462

Kit ventilatore plus, composto da:

- 1 ventilatore tangenziale
- 1 telecomando
- 1 centralina muro
- 1 sonda temperatura
- 1 micro porta

Kit ventilation includes

- 1 tangential fan*
- 1 remote control*
- 1 wall control unit*
- 1 temperature probe*
- 1 door microswitch*



KIT CANALIZZAZIONE LEONE 60-70-80 / DUCTING KIT LEONE 60-70-80

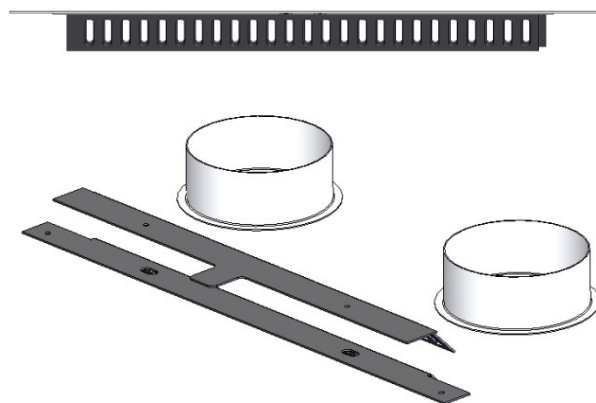
La canalizzazione è comprensiva di una griglia che permette di regolare il flusso d'aria tra canalizzazione e frontale

The ducting includes a grille that allows you to adjust the air flow between the ducting and the front

LEONE 60 : 32438 + 32462

LEONE 70 : 32439 + 32462

LEONE 80 : 32440 + 32462

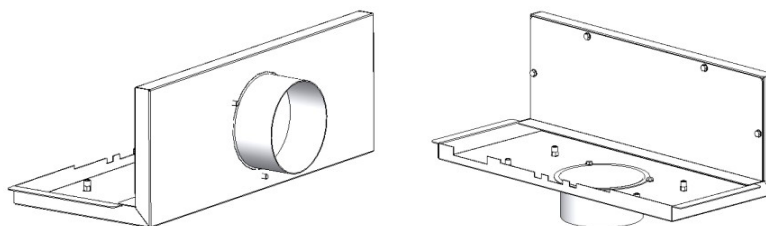


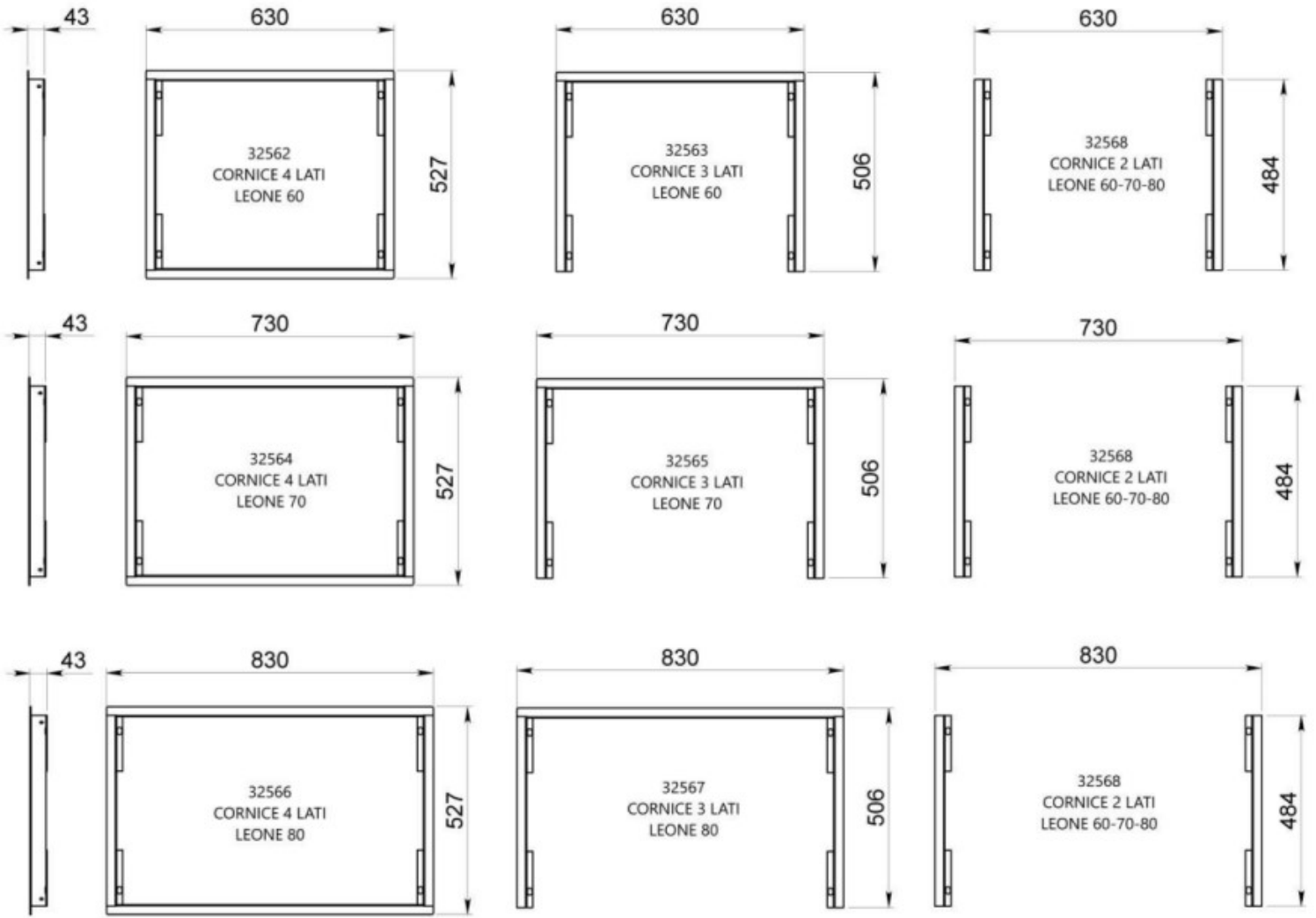
RACCORDO INGRESSO ARIA COMBURENTE LEONE 60-70-80 / INLET COMBUSTION AIR LEONE 60-70-80

32498 | LEONE 60 - 70 - 80

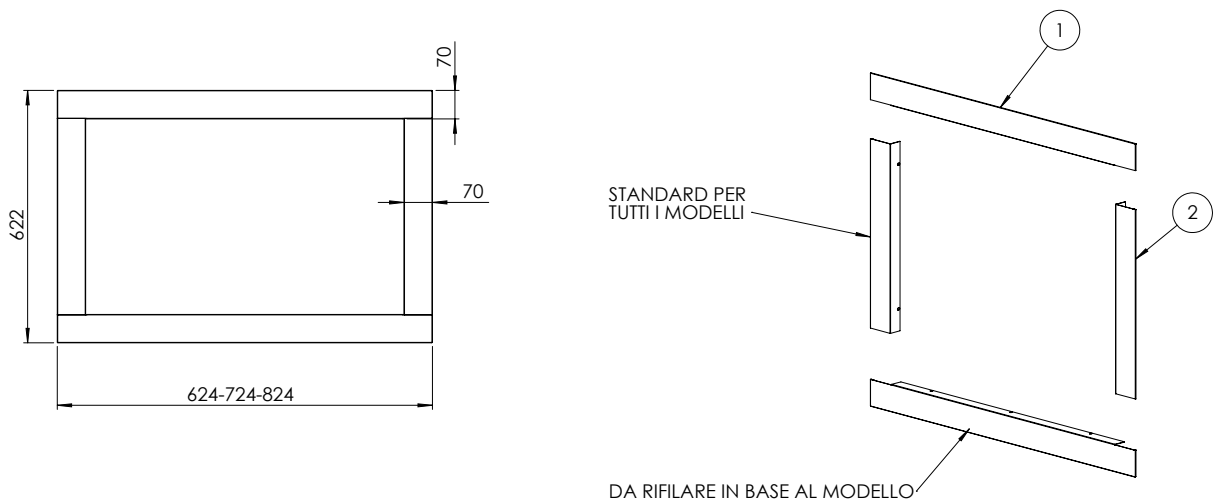
Ingresso aria comburente posteriore o dal basso.

Inlet aircombustion airflow back - bottom





32569 | Cornice passepartout di compensazione in rete metallica - Compatibile per tutti i modelli Leone 60-70-80
 Metal wire passepartout frame - Compatible with all Leone models 60-70-80



gamma

ACCESSORI
ACCESSORIES

line



Bocchette e griglie

Bocchette e griglie

32522 - 32251

32522 |

Bocchetta a soffitto, apertura regolabile, per tubi Ø 80 mm
Ceiling grille, adjustable opening, for pipes Ø 80 mm



32251 |

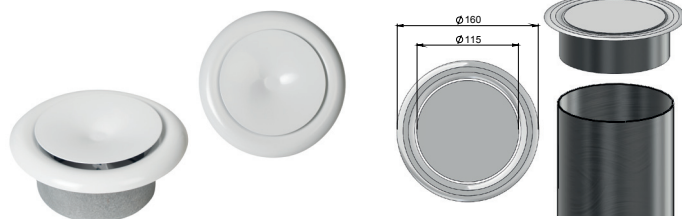
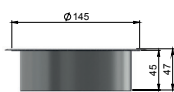
Bocchetta a soffitto, apertura regolabile, per tubi Ø 100 mm
Ceiling grille, adjustable opening, for pipes Ø 100 mm



32253

32253 |

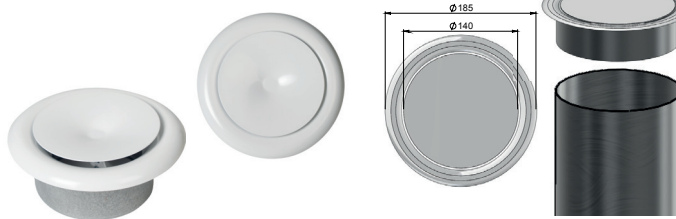
Bocchetta a soffitto, apertura regolabile, per tubi Ø 125 mm
Ceiling grille, adjustable opening, for pipes Ø 125 mm



32252

32252 |

Bocchetta a soffitto, apertura regolabile, per tubi Ø 150 mm
Ceiling grille, adjustable opening, for pipes Ø 150 mm



32480 - 32481 - 32482 - 32483

32480 |

Bocchetta a parete/soffitto, colore bianco, A = Ø 80 mm
Wall / ceiling nozzle, white color, A = Ø 80 mm
B=142 mm - PA = 50 cm²

32482 |

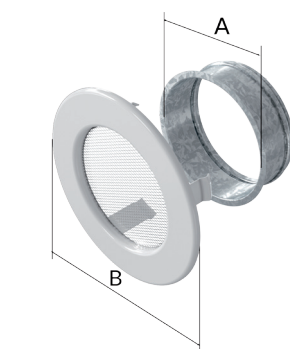
Bocchetta a parete/soffitto, colore bianco, A = Ø 125 mm
Wall / ceiling nozzle, white color, A = Ø 125 mm
B=173 mm - PA = 70 cm²

32481 |

Bocchetta a parete/soffitto, colore bianco, A = Ø 100 mm
Wall / ceiling nozzle, white color, A = Ø 100 mm
B=142 mm - PA = 60 cm²

32483 |

Bocchetta a parete/soffitto, colore bianco, A = Ø 150 mm
Wall / ceiling nozzle, white color, A = Ø 150 mm
B=198 mm - PA = 80 cm²

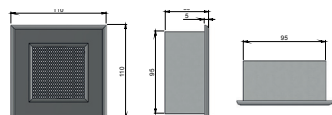


PA = Portata aria / Air quantity

32194

32194 |

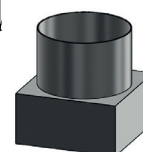
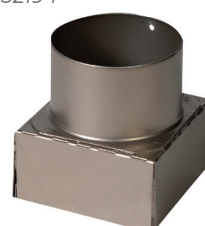
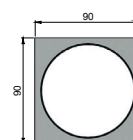
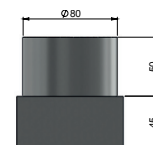
Griglia bianca con telaio, dimensioni 11x11 cm
White grill with frame, dim. 11x11 cm



32218

32218 |

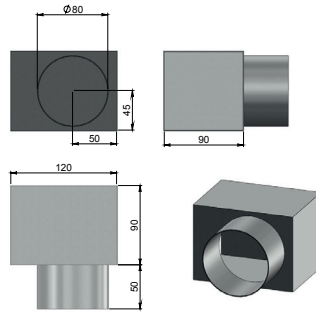
Raccordo a tubo Ø 80 mm per griglia 11x11 cod. 32194
Pipe connection for grill 11x11 cod. 32194



32234

32234 |

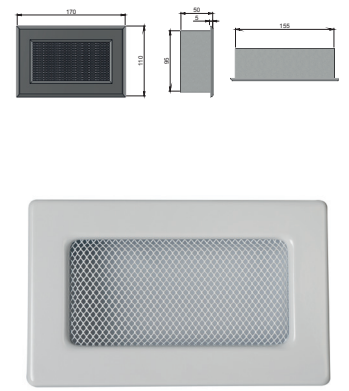
Raccordo laterale a tubo Ø 80 mm per griglia 11x11 cod. 32194
Lateral pipe connection for grill 11x11 cod. 32194



32195

32195 |

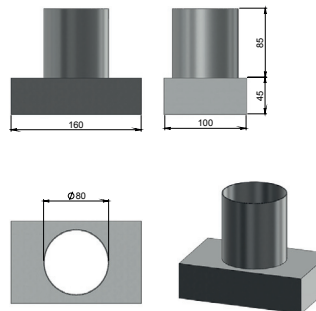
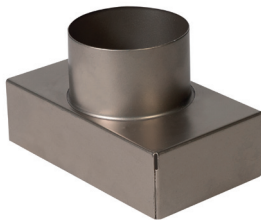
Griglia bianca con telaio, dimensioni 17x11 cm
White grill with frame, dim. 17x11 cm



32219

32219 |

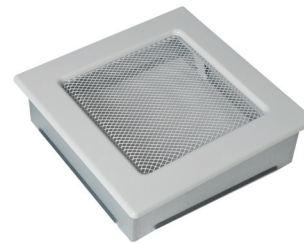
Raccordo a tubo Ø 80 mm per griglia 17x11 cod. 32195
Pipe connection for grill 17x11 cod. 32195



32197

32197 |

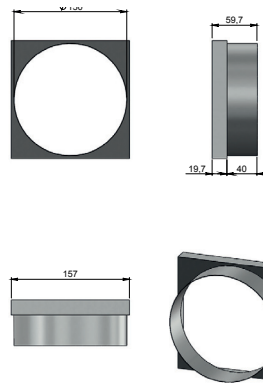
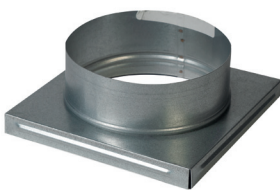
Griglia bianca con telaio, dimensioni 17x17 cm
White grill with frame, dim. 17x17



32199

32199 |

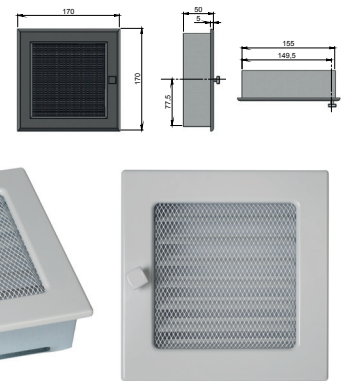
Raccordo a tubo Ø 150 mm per griglia 17x17 cod. 32197-32198
Pipe connection for grill 17x17 cod. 32197-32198



32198

32198 |

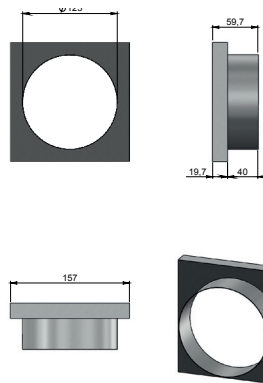
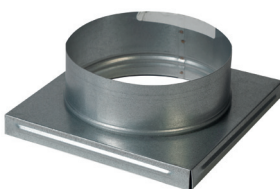
Griglia bianca con telaio, flusso aria regolabile, dim. 17x17 cm
White grill with frame, adjustable, dim. 17x17 cm



32200

32200 |

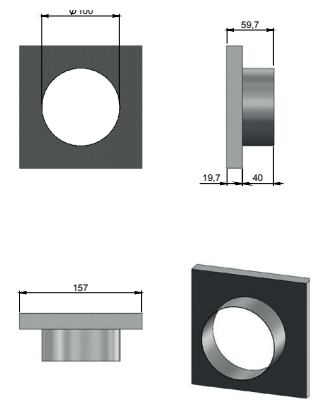
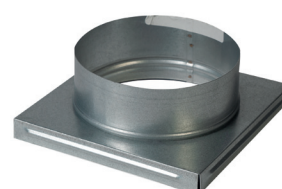
Raccordo a tubo Ø 125 mm per griglia 17x17 cod. 32197-32198
Pipe connection for grill 17x17 cod. 32197-32198



32201

32201 |

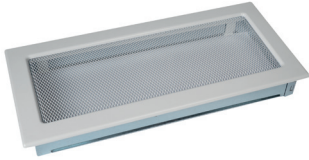
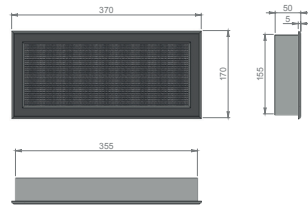
Raccordo a tubo Ø 100 mm per griglia 17x17 cod. 32197-32198
Pipe connection for grill 17x17 cod. 32197-32198



32203

32203 |

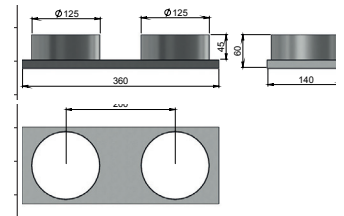
Griglia bianca con telaio, dimensioni 17x37 cm
White grill with frame, dim. 17x37 cm



32205

32205 |

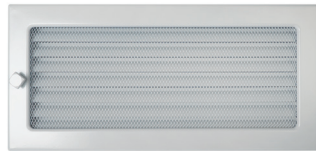
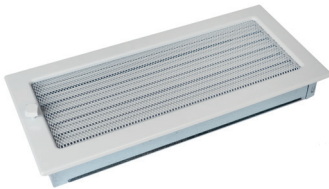
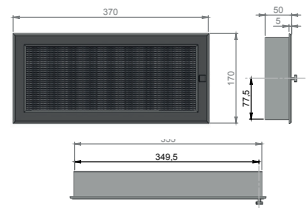
Raccordo a n° 2 tubi Ø 125 mm per griglia 17x37 cm
cod. 32203-32204
Pipes connection for grill 17x17
cod. 32203-32204



32204

32204 |

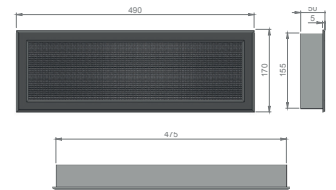
Griglia bianca con telaio, flusso aria regolabile, dim. 17x37 cm
White grill with frame, adjustable, dim. 17x37 cm



32220

32220 |

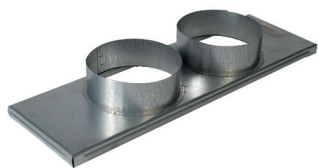
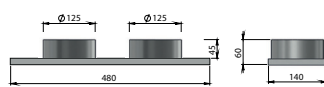
Griglia bianca con telaio, dimensioni 17x49 cm
White grill with frame, dim. 17x49 cm



32222

32222 |

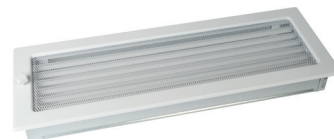
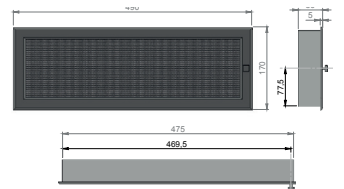
Raccordo a n° 2 tubi Ø 125 per griglia 17x49 cm
cod. 32220-32221
Pipes connection for grill 17x49
cod. 32220-32221



32221

32221 |

Griglia bianca con telaio, flusso aria regolabile, dim. 17x49 cm
White grill with frame, adjustable, dim. 17x49 cm



32214 - 32215 - 32255

32214 |

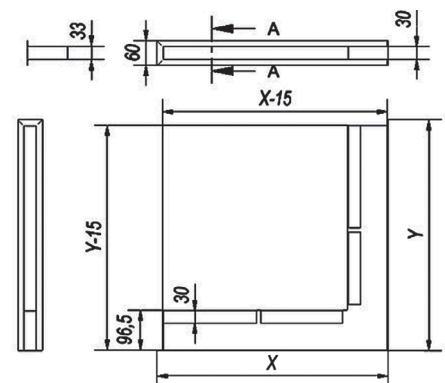
Bocchetta aria angolo 490 cm², dim. X=560, Y=560 H 60 mm
Corner air grill 490 cm²

32255 |

Bocchetta aria angolo sinistro 580 cm², dim. X=547, Y=766 H 60 mm
Corner left air grill 580 cm²

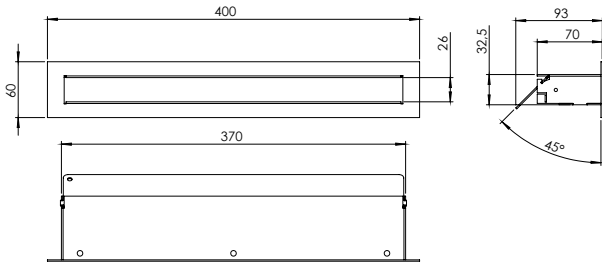
32215 |

Bocchetta aria angolo destro 580 cm², dim. X=766, Y=547 H 60 mm
Corner right air grill 580 cm²

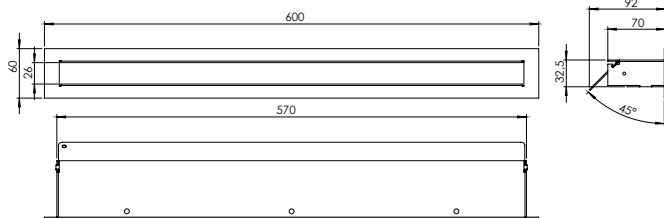


32210**32210 |**

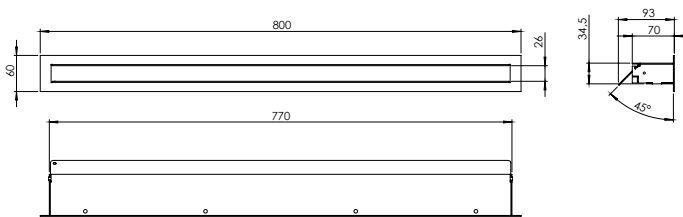
Bocchetta aria frontale 170 cm²,
 colore bianco, L 40 x H 6 cm
*Frontal air grill 170 cm²,
 color white, L 40 x H 6 cm*

**32211****32211 |**

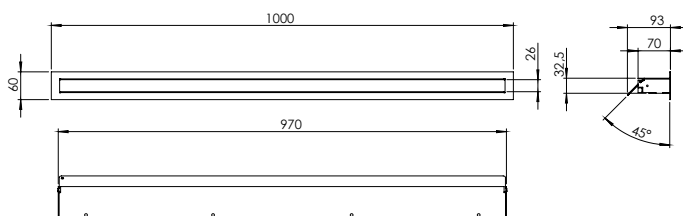
Bocchetta aria frontale 260 cm²,
 colore bianco, L 60 x H 6 cm
*Frontal air grill 260 cm²,
 color white, L 60 x H 6 cm*

**32212****32212 |**

Bocchetta aria frontale 360 cm²,
 colore bianco, L 80 x H 6 cm
*Frontal air grill 360 cm²,
 color white, L 80 x H 6 cm*

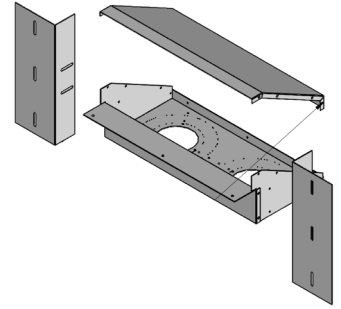
**32213****32213 |**

Bocchetta aria frontale 440 cm²,
 colore bianco, L 100 x H 6 cm
*Frontal air grill 440 cm²,
 color white, L 100 x H 6 cm*

**32431****32431 |**

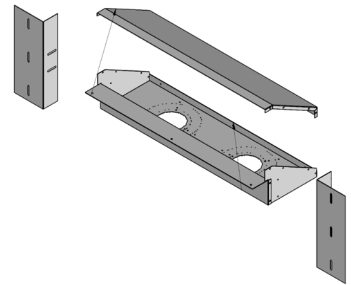
Raccordo aria per griglia 40x6
 cod. 32210, predisposto per N°
 2 collarini Ø 80 / Ø 100 / Ø 150
 mm (forniti a parte)

*Air connection for grill 40x6
 cod. 32210, designed for n° 2
 collars Ø 80 / Ø 100 / Ø 150 mm
 (supplied separately)*

**32432****32432 |**

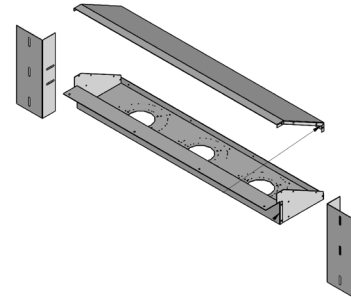
Raccordo aria per griglia 60x6
 cod. 32211, predisposto per N°
 2 collarini Ø 80 / Ø 100 / Ø 150
 mm (forniti a parte)

*Air connection for grill 60x6
 cod. 32211, designed for N° 2
 collars Ø 80 / Ø 100 / Ø 150 mm
 (supplied separately)*

**32433****32433 |**

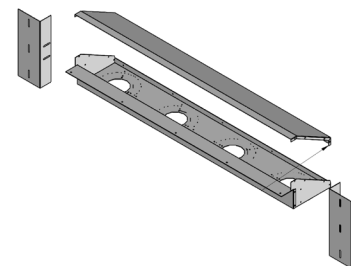
Raccordo aria per griglia 80x6
 cod. 32212, predisposto per N°
 3 collarini Ø 80 / Ø 100 / Ø 150
 mm (forniti a parte)

*Air connection for grill 80x6
 cod. 32212, designed for N° 3
 collars Ø 80 / Ø 100 / Ø 150 mm
 (supplied separately)*

**32434****32434 |**

Raccordo aria per griglia 100x6
 cod. 32213, predisposto per N°
 4 collarini Ø 80 / Ø 100 / Ø 150
 mm (forniti a parte)

*Air connection for grill 100x6
 cod. 32213, designed for N° 4
 collars Ø 80 / Ø 100 / Ø 150 mm
 (supplied separately)*



GRIGLIE DESIGN

Griglia bianca con telaio
White grill with frame

32479 |

A=22 | B=22 | a=20,1 | b=19,9 cm
PA=142 cm²



32484 |

A=22 | B=30 | a=20,1 | b=27,9 cm
PA=237 cm²



32485 |

A=22 | B=37 | a=20,1 | b=34,9 cm
PA=305 cm²



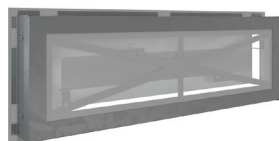
32486 |

A=22 | B=45 | a=20,1 | b=42,9 cm
PA=392 cm²

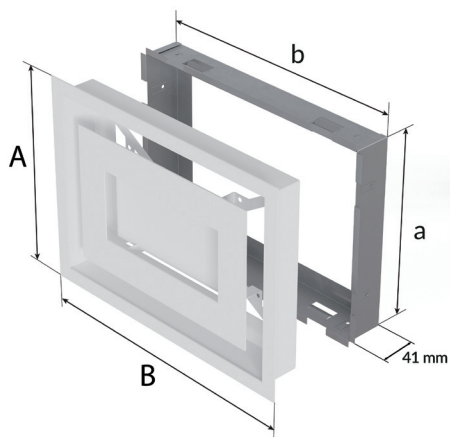


32478 |

A=17 | B=49 | a=15,1 | b=46,9 cm
PA=267 cm²



PA = Portata aria / Air quantity

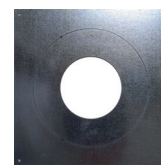


RACCORDI PER GRIGLIE DESIGN

Raccordi per griglie design
Fittings for design grids

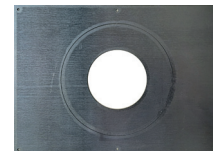
32487 |

Piastra raccordo per griglia **32479**
Predisposta per collarini
Ø 80 / Ø 150 mm (forniti a parte)



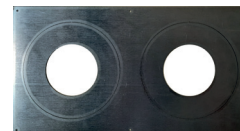
32488 |

Piastra raccordo per griglia **32484**
Predisposta per collarini
Ø 80 / Ø 150 mm (forniti a parte)



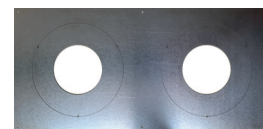
32489 |

Piastra raccordo per griglia **32485**
Predisposta per collarini
Ø 80 / Ø 150 mm (forniti a parte)



32494 |

Piastra raccordo per griglia **32486**
Predisposta per collarini
Ø 80 / Ø 150 mm (forniti a parte)



32490 |

Piastra raccordo per griglia **32478**
Predisposta per collarini Ø 80
(forniti a parte)



COLLARI PER RACCORDI

Collari per raccordi
Collars for fittings

32343 |

Collarino Ø 60 mm, h 60 mm

29961 |

Collarino Ø 80 mm, h 60 mm

26260 |

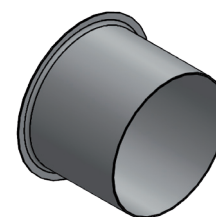
Collarino Ø 100 mm, h 50 mm

32527 |

Collarino Ø 125 mm, h 50 mm

27434 |

Collarino Ø 150 mm, h 60 mm



Tubazioni tonde

Round pipes

27509 - 27550

27509 |

Guaina distribuzione aria isolata termicam. / fonicamente Ø 160 mm lungh. 10 metri

Sheath air distribution thermally/phonically insulated Ø 160 mm length. 10 meters

27550 |

Ø 127 mm lungh. 10 metri
Ø 127 mm length. 10 meters



27510 - 32287 - 32471

27510 |

Guaina distribuzione aria isolata termicam. / fonicamente Ø 102 mm lungh. 10 metri

Sheath air distribution thermally/phonically insulated Ø 102 mm length. 10 meters

32287 |

Ø 80 mm lungh. 10 metri
Ø 80 mm length. 10 meters

32471 |

Ø 60 mm lungh. 10 metri
Ø 60 mm length. 10 meters



32415 - 32416 - 32417 - 32418

32415 |

Tubo estensibile alluminio Ø 155 mm, spezzone 3 metri

Aluminum extensible pipe Ø 155 mm, piece 3 meters

32416 |

Tubo estensibile alluminio Ø 125 mm, spezzone 3 metri

Aluminum extensible pipe Ø 125 mm, piece 3 meters

32417 |

Tubo estensibile alluminio Ø 100 mm, spezzone 3 metri

Aluminum extensible pipe Ø 100 mm, piece 3 meters

32418 |

Tubo estensibile alluminio Ø 80 mm, spezzone 3 metri

Aluminum extensible pipe Ø 80 mm, piece 3 meters



32191 - 32192 - 32193

32191 |

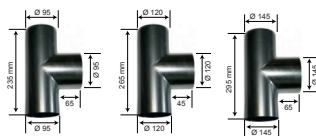
T per tubi aria Ø 100 mm
T for pipes Ø 100 mm

32192 |

T per tubi aria Ø 125 mm
T for pipes Ø 125 mm

32193 |

T per tubi aria Ø 150 mm
T for pipes Ø 150 mm



32251 - 32248 - 32249 - 32250

32521 |

Y per tubi aria Ø 80 mm
Y for pipes Ø 80 mm

32248 |

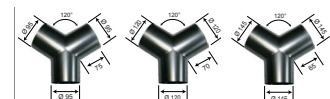
Y per tubi aria Ø 100 mm
Y for pipes Ø 100 mm

32249 |

Y per tubi aria Ø 125 mm
Y for pipes Ø 125 mm

32250 |

Y per tubi aria Ø 150 mm
Y for pipes Ø 150 mm



32243 - 32245 - 32244

32243 |

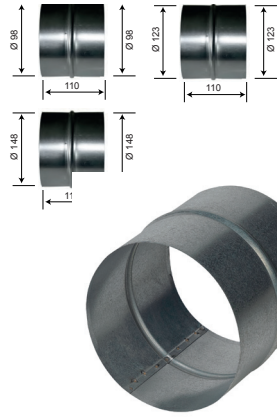
Raccordo tubi aria Ø 100 mm
Connection pipes Ø 100 mm

32245 |

Raccordo tubi aria Ø 125 mm
Connection pipes Ø 125 mm

32244 |

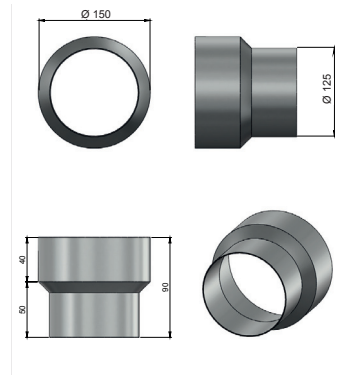
Raccordo tubi aria Ø 150 mm
Connection pipes Ø 150 mm



32246

32246 |

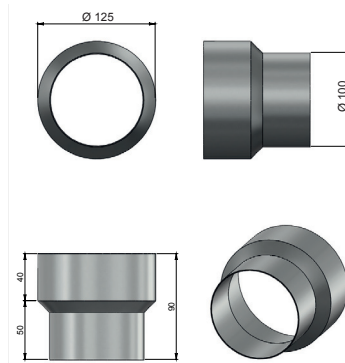
Riduzione per tubi aria da
Ø 150 a Ø 125 mm
Reduction for pipes from
Ø 150 mm to Ø 125 mm



32247

32247 |

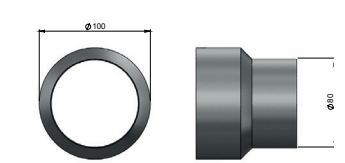
Riduzione per tubi aria da Ø 125
a Ø 100 mm
Reduction for pipes from
Ø 125 mm to Ø 100 mm



32257 - 32890

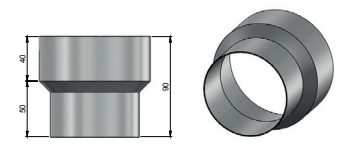
32257 |

Riduzione per tubi aria da
Ø 100 a Ø 80 mm
Reduction for pipes from
Ø 100 mm to Ø 80 mm



32890 |

Riduzione per tubi aria da
Ø 80 a Ø 60 mm
Reduction for pipes from
Ø 80 mm to Ø 60 mm



32188 - 32189 - 32190

32188 |

Chiusura presa aria Ø 100 mm
Outlet air control Ø 100 mm

32189 |

Chiusura presa aria Ø 125 mm
Outlet air control Ø 125 mm

32190 |

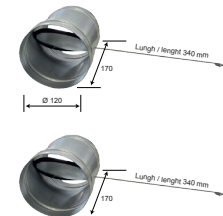
Chiusura presa aria Ø 150 mm
Outlet air control Ø 150 mm



32231 - 32254

32231 |

Valvola riduzione carico aria,
per tubi Ø 125 mm
Valve for air load reduction,
for pipes Ø 125 mm



32254 |

Valvola riduzione carico aria,
per tubi Ø 150 mm
Valve for air load reduction,
for pipes Ø 150 mm



27350 - 27351

27350 |

T acciaio inox Ø 200 mm
per limitatore di tiraggio
T stainless steel Ø 200 mm
for smoke limiter

27351 |

Limitatore di tiraggio universale
per tubi Ø180/Ø200 mm
Universal smoke limiter for
tube Ø 180/Ø200 mm



27356 - 27351

27356 |

T acciaio inox Ø 180 mm
per limitatore di tiraggio
T stainless steel Ø 180 mm
for smoke limiter

27351 |

Limitatore di tiraggio universale
per tubi Ø180/Ø200 mm
Universal smoke limiter for
tube Ø 180/Ø200 mm



32179 - 32180 - 32181

32179 |

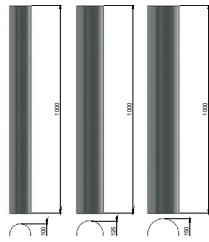
Tubo zincato Ø 100 mm, 1 m
Galvaniz. pipe Ø 100 mm, 1 m

32180 |

Tubo zincato Ø 125 mm, 1 m
Galvaniz. pipe Ø 125 mm, 1 m

32181 |

Tubo zincato Ø 150 mm, 1 m
Galvaniz. pipe Ø 150 mm, 1 m



32182 - 32183 - 32184

32182 |

Curva zincata 90°, Ø 100 mm
Galvaniz. bend 90°, Ø 100 mm

32183 |

Curva zincata 90°, Ø 125 mm
Galvaniz. bend 90°, Ø 125 mm

32184 |

Curva zincata 90°, Ø 150 mm
Galvaniz. bend 90°, Ø 150 mm



32185 - 32186 - 32187

32185 |

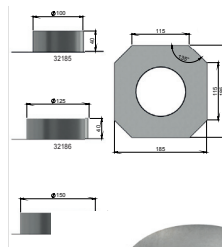
Rosetta Ø 100 mm
Rosetta Ø 100 mm

32186 |

Rosetta Ø 125 mm
Rosetta Ø 125 mm

32187 |

Rosetta Ø 150 mm
Rosetta Ø 150 mm



27512

27512 |

N° 10 fascette per tubi inox da
Ø 60 mm a Ø 270 mm

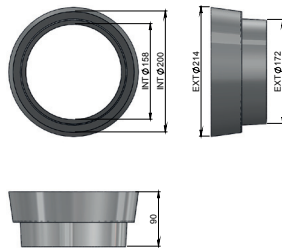
*N° 10 pipe clamps for pipes
from Ø 60 mm to Ø 270 mm*



27314

27314 |

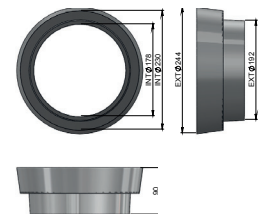
Riduzione in ghisa
Ø 200 - Ø 180 mm
*Cast iron reduction
Ø 200 - Ø 180 mm*



27376

27376 |

Riduzione in ghisa
Ø 230 - Ø 200 mm
*Cast iron reduction
Ø 230 - Ø 200 mm*



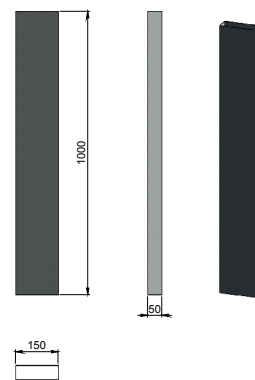
Tubazioni piatte

Tubazioni piatte

32167

32167 |

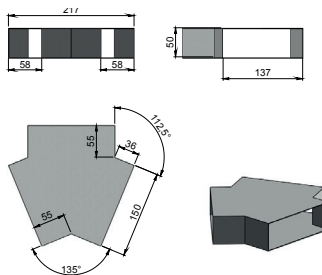
Tubazione distribuzione aria rettangolare, dim. 5x15x100 cm
Rectangular air distribution piping, dim. 5x15x100 cm



32168

32168 |

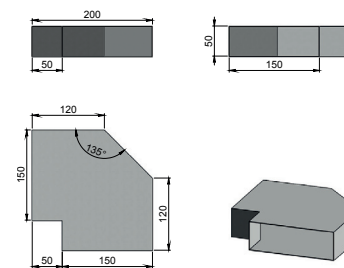
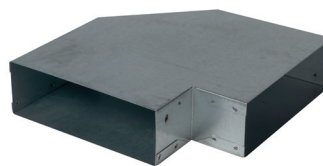
Y per tubazione aria rettangolare
Y-pipe rectangular air



32169

32169 |

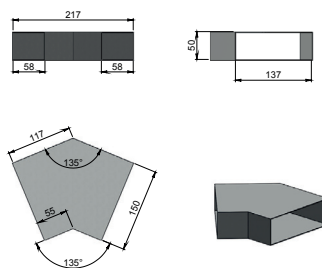
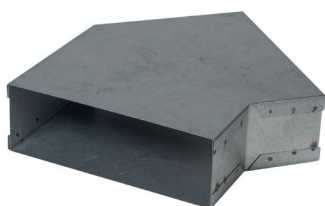
Curva piana 90° per tubazione rettangolare
Plane bend 90° for rectangular tubing



32170

32170 |

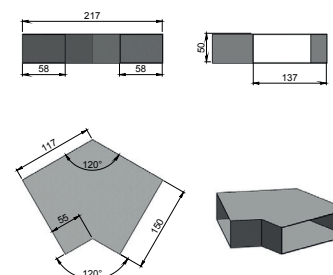
Curva piana 45° per tubazione rettangolare
Plane bend 45° for rectangular tubing



32171

32171 |

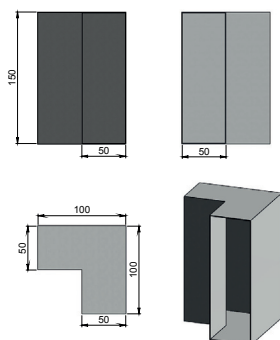
Curva piana 30° per tubazione rettangolare
Plane bend 30° for rectangular tubing



32172

32172 |

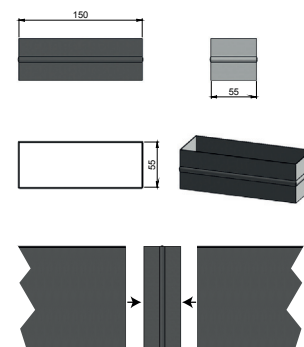
Curva verticale 90° per tubazione rettangolare
Vertical bend 90° for rectangular tubing



32173

32173 |

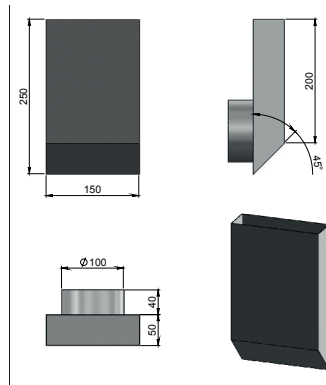
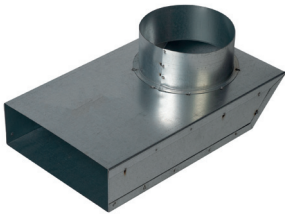
Raccordo tubazioni rettangolare/rettangolare
Connection pipes rectangular / rectangular



32174

32174 |

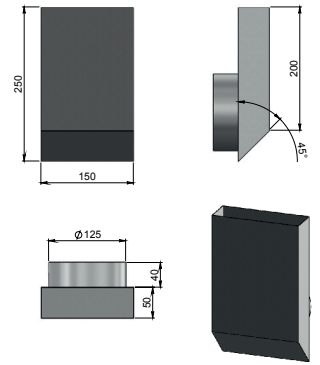
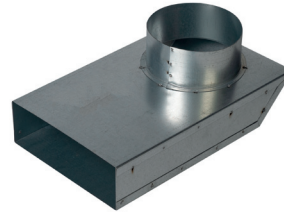
Raccordo tubazioni
rettangolare/tonda Ø 100 mm
Connection pipes
rectangular/round Ø 100 mm



32175

32175 |

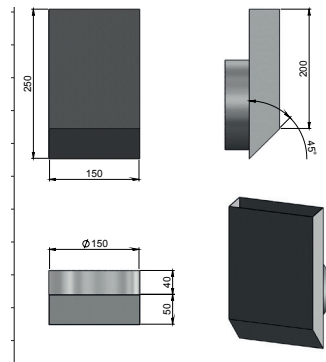
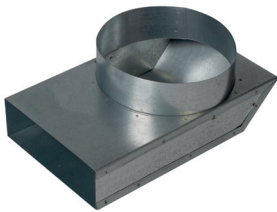
Raccordo tubazioni
rettangolare/tonda Ø 125 mm
Connection pipes
rectangular/round Ø 125 mm



32176

32176 |

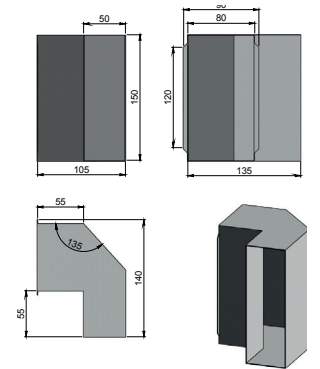
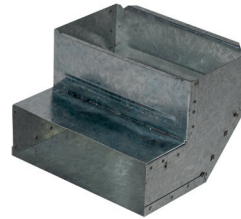
Raccordo tubazioni
rettangolare/tonda Ø 150 mm
Connection pipes
rectangular/round Ø 150 mm



32177

32177 |

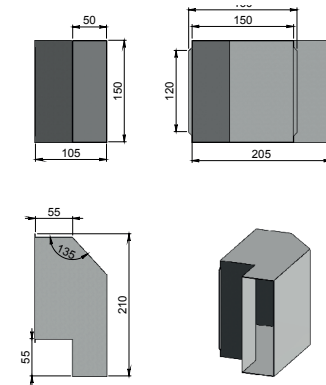
Raccordo tubaz.rettangolare/
bocchetta 11x17 cm (cod. 32195)
Connection pipe rectangular/
air vent 11x17 cm (code 32195)



32178

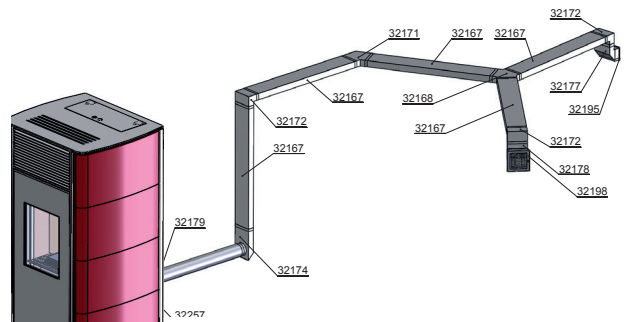
32178 |

Raccordo tubaz.rettangolare/
bocchetta 17x17 cm
(cod. 32197-32198)
Connection pipe rectangular/
air vent 17x17 cm
(code 32197-32198)



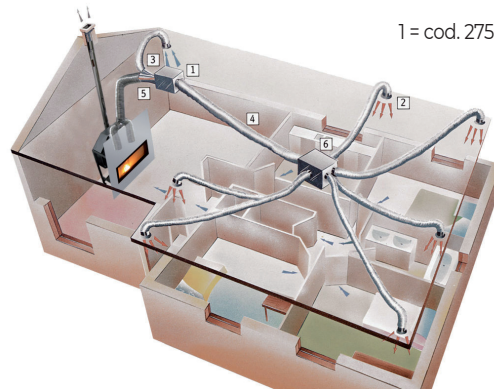
MODULI RETTANGOLARI

Sistema di canalizzazione aria con moduli rettangolari
Air channel system with rectangular tube



Sistema centralizzato Airchauff

Sistema centralizzato Airchauff



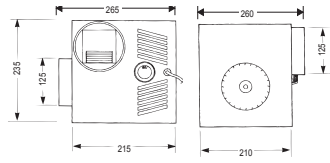
- 1 = cod. 27502 (or 27501 or 27498)
- 2 = cod. 32251
- 3 = cod. 32252
- 4 = cod. 27509
- 5 = cod. 32220
- 6 = cod. 27544

Sistema di canalizzazione aria con Airchauff e guaine isolate
Air channeling system with Airchauff and insulated sheaths

27500

27500 |

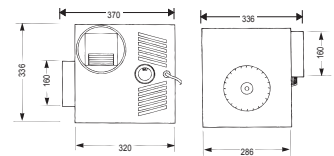
Motore aspirazione/distribuzione aria calda, mod. Airchauff 300 m³/ora senza by-pass, con termosonda per accensione e spegnimento automatico
Extractor motor / hot air distribution, mod. Airchauff 300 m³/hr without by-pass and temperature sensor for automatic starting and stopping



27498

27498 |

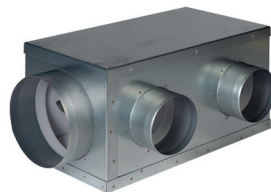
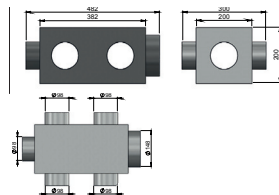
Motore aspirazione/distribuzione aria calda, mod. Airchauff 800 m³/ora senza by-pass, con termosonda per accensione e spegnimento automatico
Extractor motor / hot air distribution, mod. Airchauff 800 m³/hr without by-pass and temperature sensor for automatic starting and stopping



27544

27544 |

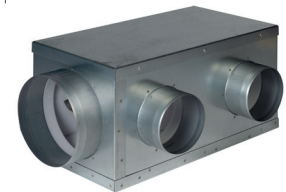
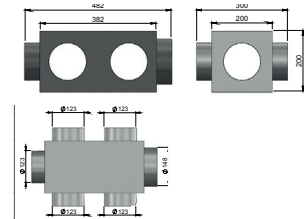
Modulo ripartitore aria, isolato, entrata Ø 150, n° 5 uscite da Ø 100
Air distributor module, isolated, entry Ø 150, N° 5 exit Ø 100



27545

27545 |

Modulo ripartitore aria, isolato, entrata Ø 150, n° 5 uscite da Ø 125
Air distributor module, isolated, entry Ø 150, N° 5 exit Ø 125

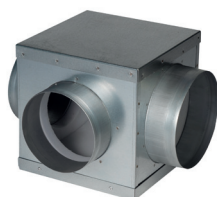
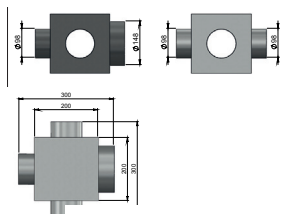


27546

27546 |

Modulo ripartitore aria, isolato,
entrata Ø 150, n° 3 uscite da
Ø 100 mm

*Air distributor module, isolated,
entry Ø 150, N° 3 exit Ø 100 mm*

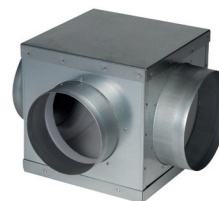
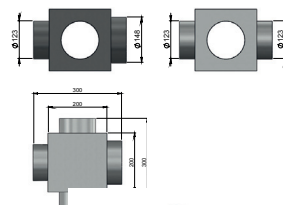


27547

27547 |

Modulo ripartitore aria, isolato,
entrata Ø 150, n° 3 uscite da Ø
125 mm

*Air distributor module, isolated,
entry Ø 150, N° 3 exit Ø 125 mm*



Prodotti pulizia Cleaning products

Venduti esclusivamente in box
(confezioni minime indicate in ciascun prodotto)

*Sold exclusively in boxes
(minimum packages indicated in each product)*



30101 - 30103

**30101 |
30103 |**

Puliscivetro ad alta efficacia
Glass cleaner high performance
30101 500 ml, box 12 pz
30103 1000 ml, box 12 pz

Tubi coassiali per camini a gas

Coaxial pipes for gas fireplaces

Ø 100/150 mm

Attenzione: tutti i tubi coassiali sono a norma e certificati anche se non hanno la guarnizione (non obbligatoria).

Le fascette di sicurezza sono già comprese, già montate, con tubi e curve senza sovrapprezzo.

Assemblaggio per incastro, tenuta stagna meccanica. Condotto interno inox 316L, condotto esterno inox 304.

Misure disegni in mm

31021 - 31022 - 31023

31021 |

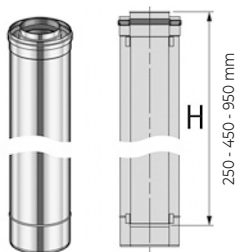
Tubo da 100 cm (utile 95)

31022 |

Tubo da 50 cm (utile 45)

31023 |

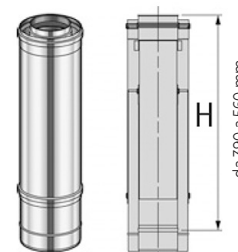
Tubo da 25 cm



31024

31024 |

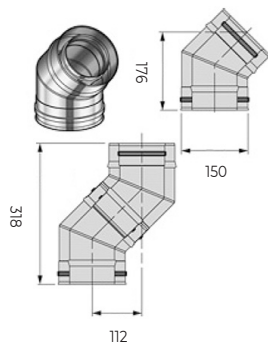
Tubo regolabile da 39 a 56 cm



31025

31025 |

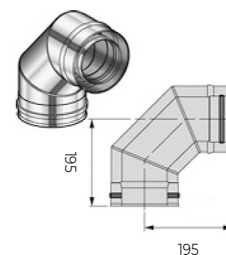
Curva a 45°



31026

31026 |

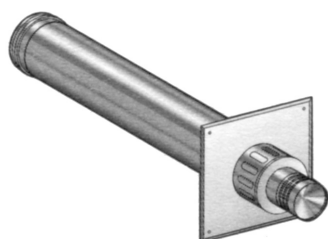
Curva a 90°



31027

31027 |

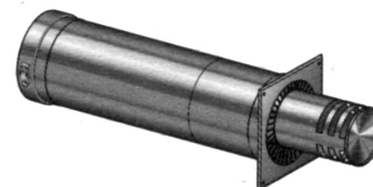
Terminale scarico a parete fisso
lunghezza 80+20 cm
placca 27x27 cm



31028

31028 |

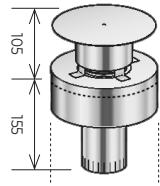
Terminale scarico a parete
regolabile, da 45 a 65 cm



31029

31029 |

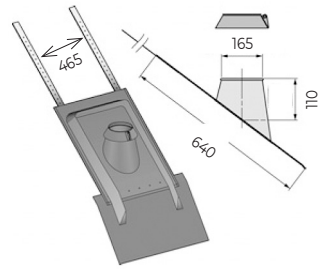
Terminale scarico a tetto



31030

31030 |

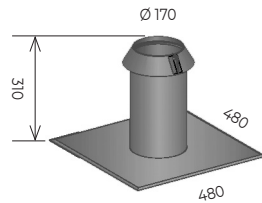
Raccordo tetto inclinato 15°-30° inox compreso di kit in piombo nero per sigillatura ai coppi



31031

31031 |

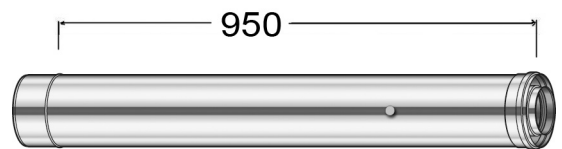
Raccordo a tetto piatto verniciato color nero



31037

31037 |

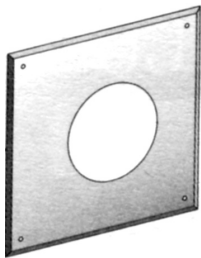
Tubo per prelievo fumi da 100 cm (utile 95)



31032

31032 |

Rosetta muro



31033

31033 |

Flangia fissaggio a muro



31034

31034 |

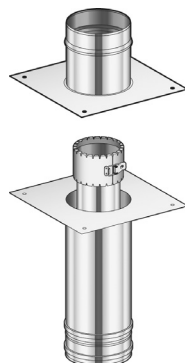
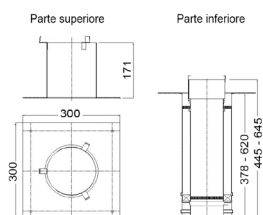
Fascetta chiusura sicurezza



31035

31035 |

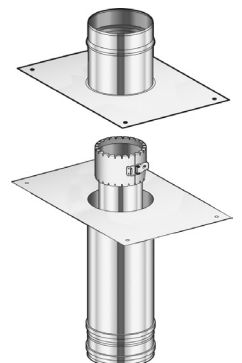
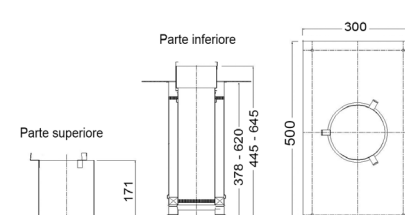
Kit utilizzo canna muratura con flangia quadrata 30x30 cm (parte inferiore regolabile)



31038

31038 |

Kit utilizzo canna muratura con flangia quadrata 50x30 cm (parte inferiore regolabile)



Tubi coassiali per camini a gas

Coaxial pipes for gas fireplaces

Ø 130/200 mm

Attenzione: tutti i tubi coassiali sono a norma e certificati anche se non hanno la guarnizione (non obbligatoria).

Le fascette di sicurezza sono già comprese, già montate, con tubi e curve senza sovrapprezzo.

Assemblaggio per incastro, tenuta stagna meccanica. Condotto interno inox 316L, condotto esterno inox 304.

Misure disegni in mm

31019 - 31020 - 31051

31019 |

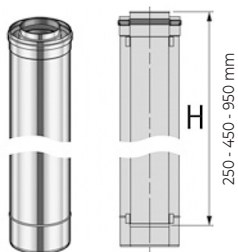
Tubo da 100 cm (utile 95)

31020 |

Tubo da 50 cm (utile 45)

31051 |

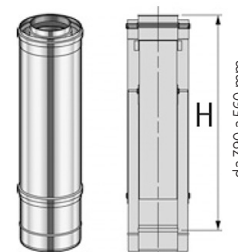
Tubo da 25 cm



31052

31052 |

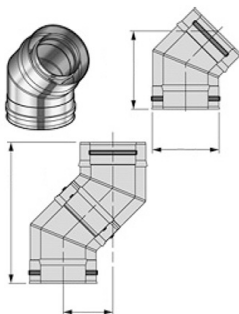
Tubo regolabile da 39 a 56 cm



31053

31053 |

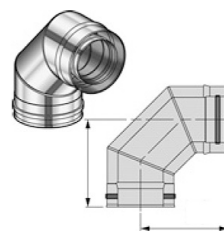
Curva a 45°



31054

31054 |

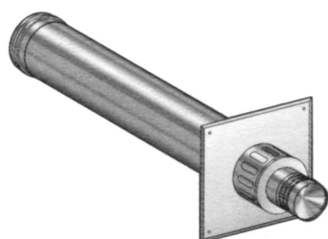
Curva a 90°



31055

31055 |

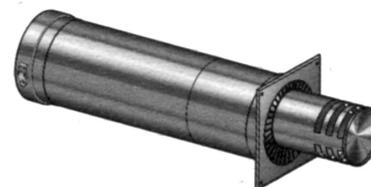
Terminale scarico a parete fisso
lunghezza 80+20 cm



31057

31057 |

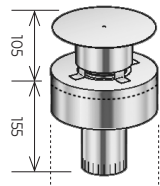
Terminale scarico a parete
regolabile, da 45 a 65 cm



31056

31056 |

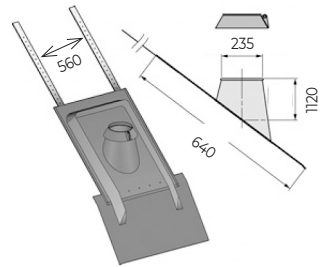
Terminale scarico a tetto



31009

31009 |

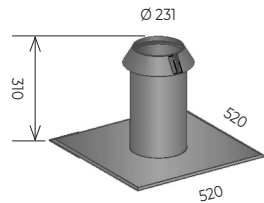
Raccordo tetto inclinato 15°-30° inox compreso di kit in piombo nero per sigillatura ai coppi



31010

31010 |

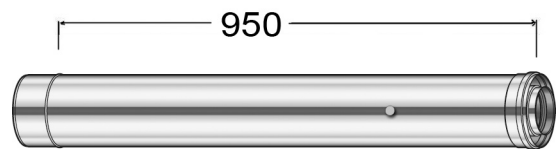
Raccordo a tetto piatto verniciato color nero



31063

31063 |

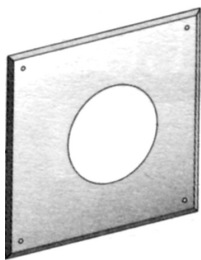
Tubo per prelievo fumi da 100 cm (utile 95)



31011

31011 |

Rosetta muro



31012

31012 |

Flangia fissaggio a muro



31013

31013 |

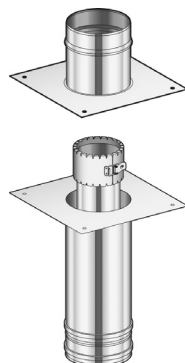
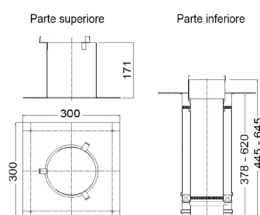
Fascetta chiusura sicurezza



31061

31061 |

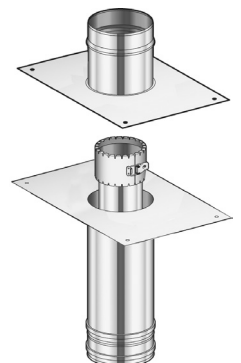
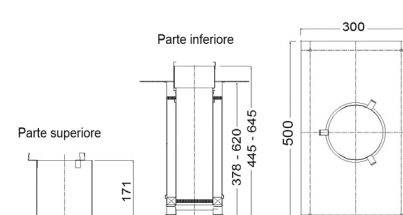
Kit utilizzo canna muratura con flangia quadrata 30x30 cm (parte inferiore regolabile)



31064

31064 |

Kit utilizzo canna muratura con flangia quadrata 50x50 cm (parte inferiore regolabile)



Rivenditore Autorizzato / Reseller:



L'ARTISTICO SRL
Via Nazionale 2 - 25080
Raffa di Puegnago (BS)



www.lartistico.com